



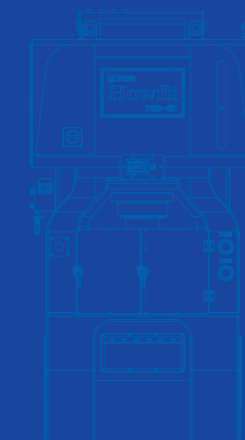
**HOWFIT**  
豪辉科技



HHC Series



DDL Series



DHS Series



DDH Series



H Series



MARX Series



S Series



**HOWFIT**  
豪辉科技 股票代码: 870520

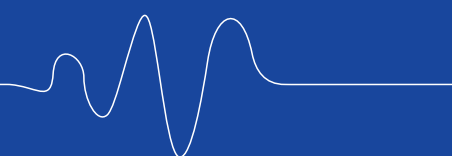
**广东豪辉科技股份有限公司**  
HOWFIT SCIENCE AND TECHNOLOGY CO.,LTD

中国广东省东莞市沙田镇齐沙村轮渡路信太工业园D栋  
Building D, Xintai Industrial Park, Lundu Road, Qisha Village,  
Shatian Town, Dongguan City, Guangdong Province, China.  
Tel: +86-769-8588 8926 8588 8936  
Fax: +86-769-8508 8468

E-mail: [sales@howfit-press.com](mailto:sales@howfit-press.com)  
Http://[www.haohuijx.com](http://www.haohuijx.com)  
[www.howfit-press.com](http://www.howfit-press.com)

**2006-2023**

Innovation Never Stops  
创新从未止步



With the better and seek after the best,  
the quality is social responsibility.

**精益求精——品质就是社会责任**

引领行业技术创新发展，全面提升核心竞争力，  
占领产业技术发展的最高点。

To lead the development of technological innovation in the industry,  
to enhance the overall core competitiveness, and to occupy the highest point  
of technological development in the industry.





## Company Mission 公司使命

品牌兴，则企业兴！  
If the brand is prosperous, the enterprise is prosperous!

企业兴，则国家兴！  
If the enterprise prospers, the country prospers!

品牌，让中国更受尊敬！  
Brand, make China more respected!

[www.haohuijx.com](http://www.haohuijx.com) / [www.howfit-press.com](http://www.howfit-press.com)

HOWFIT

## Values 价值观

引领、创新、科技、诚信。  
Leadership, innovation, technology, and integrity.

## Cultural Philosophy 文化理念

【经营理念：稳健勤俭 市场计划】  
Business philosophy: steady, diligent and thrifty market plan

【用人理念：以德优先 适才适岗】  
Employment philosophy: moral priority, suitable for the right job

【管理理念：制度责任 表单报告】  
Management philosophy: system responsibility form report

【工作理念：服务为本 共享利润】  
Work philosophy: service-oriented, profit-sharing

# 60000 M<sup>2</sup>

在建生产基地占地

The production site under construction covers an area of

# 4 ~ 6 亿

预计年产能

Estimated annual production capacity

# 20 名

研发人员

R&D Staff

# 16 国

出口国家

Export Countries



广东豪辉科技股份有限公司成立于2006年，是一家集研发、生产、销售于一体的国家高新技术企业，同时被评为“高速冲床专业自主创新示范企业”，“广东省守合同重信用模范企业”，“广东省高成长企业”，“科技型中小企业”，“广东省名牌产品”，“广东省智能高速精密压力机工程技术研究中心”。

为适应未来业务发展的需要，强化公司智能制造能力，公司于2017年1月16日在北京全国中小企业股份转让系统新三板挂牌上市，股票代码：870520。豪辉科技立足长远，从技术引进、人才引入、技术消化、技术吸收到本土化创新，注重产品研发，现拥有三项发明专利、四项软件著作权、二十六项实用新型专利、二项外观专利。

公司产品广泛应用于新能源电机、半导体、消费电子、家用电器等行业。

Howfit Science and Technology Co.,Ltd. founded in 2006, is a national high-tech enterprises integrating research and development, production and sales. It has also been awarded as “High-speed Press Professional Independent Innovation Demonstration Enterprise”, “Guangdong Model Enterprise Abiding by Contract and Respecting Credit”, “Guangdong High Growth Enterprise”, and “Technology-oriented Small and Medium-size Enterprise”, “Guangdong Famous Brand Product”, “Guangdong Intelligent High Speed Precision Press Engineering Technology Research Center”.

In order to meet the needs of future business development and strengthen the intelligent manufacturing capability of the company, the company was listed on Beijing National Sme Share Transfer System new Third board (NEEQ) on January 16,2017, stock code:870520. Howfit based on the long-term, from technology introduction, talent introduction, talent introduction, technology digestion, technology absorption to local innovation, model patents, focus on product research and development, now we has three invention patents, four software copyrights, twenty-six utility model patents, two appearance patents. Our products are widely used in new energy motor, semiconductor, consumer electronics, household appliances and other industries.

Our products are widely used in new energy motors, semiconductors, consumer electronics, household appliances and other industries.



**ADVANCED TECHNOLOGY  
CONTINUOUS CREATION**  
领先技术 创新不断

功以才成，业由才广。由于深谙这一道理，我们不断广纳贤才，严格录用。发展至今，公司集聚上百位中高级专业技术人才，数十位高学历管理人才，专注研发创造，不断见证行业领先、锐意进取的创新精神。同时拥有专业配送车队，物流管理中心，提供安全、快捷、准确、高效的配送和售后服务。

The success is succeeded by the talents, also the business is expanded by the talents. Because we deeply know this theory, we absorb all kinds of talents widely constantly, and use them strictly. With the developing till now, our company has gathered over 100 middle and high classes professional technology people, and several decades of high education management talents. We focus on R&D, creation, and continuously proving the creation spirit of industrial advance and sharp idea to make progress. At the same time, we have the cargo delivery management centre. So we can provide the safe, fast, correct, high efficiency delivery and after sales service.

公司生产的HC、MARX、MDH、DDH、DDL等系列高速精密自动冲床在新能源制造领域、智能设备、家用电器、五金电子等行业具有举足轻重的地位并广受好评。结合覆盖全球的完整营销网络和遍布各地的办事处，我们业绩不断攀升，无论从规模还是先进性的国内外同行中都是首屈一指。

The series of high speed press machine of HC, MARX, MDH, DDH, DDL manufactured by our company. We play an important role and receive good reputation widely in the fields new energy manufacturing, intelligence equipment, family using electrical appliance, metal and electronics etc. Depend on the global covering complete marketing internet and the offices all over the world, our business achievements is growing fast. We are in the leading place in the same industry homeland and abroad in spite of scale or advanced.



## Advantage- Precision machining 优势--精密加工

- ※ 日本大隈五面体加工中心  
Japan OKUMA machining center
- ※ 日本仓敷镗铣加工中心  
Japan KURAKI boring and milling center
- ※ 台湾龙锋立式精密磨床  
China Taiwan EVERRICH vertical precision grinding machine
- ※ 台湾龙锋数控加工中心  
China Taiwan EVERRICH cnc machining center
- ※ 台湾福硕数控加工中心  
China Taiwan FOCUS cnc machining center
- ※ 台湾上一精密平面磨床  
China Taiwan PROTH precision surface grinding machine
- ※ 日本马扎克卧式加工中心  
Japan MAZAK horizontal machining center
- ※ 日本大隈立式加工中心  
Japan OKUMA vertical machining center
- ※ 台湾高锋立式加工中心  
China Taiwan KAFO vertical machining center
- ※ 台湾鸿昌龙门铣床  
China Taiwan HUENCHEN planomiller



用心铸造高质量、高精度的工业设备，必须具备精湛的工艺，成熟的技术，严把加工过程中的每道关口，采用进口材料加工而成，使得生产时质量稳定，维修率极低，为求一流的产品应对激烈的市场竞争。

Intentions of casting quality, high precision industrial equipment, must have superb technology, mature technology, strict process every radcrossing, using imported materials processing, making stable production quality, maintenance rate is very low, in order to seek first-class products to cope with the fierce market competition.

科技引导生产力，精良的设备才能制造出优质的产品。为此，我们不断投入尖端的设备，保证了与市场的快速同步。

Technology leads productivity, and sophisticated equipment is the only way to manufacture quality products. For this reason, we continuously invest in cutting-edge equipment to ensure rapid synchronization with the market.



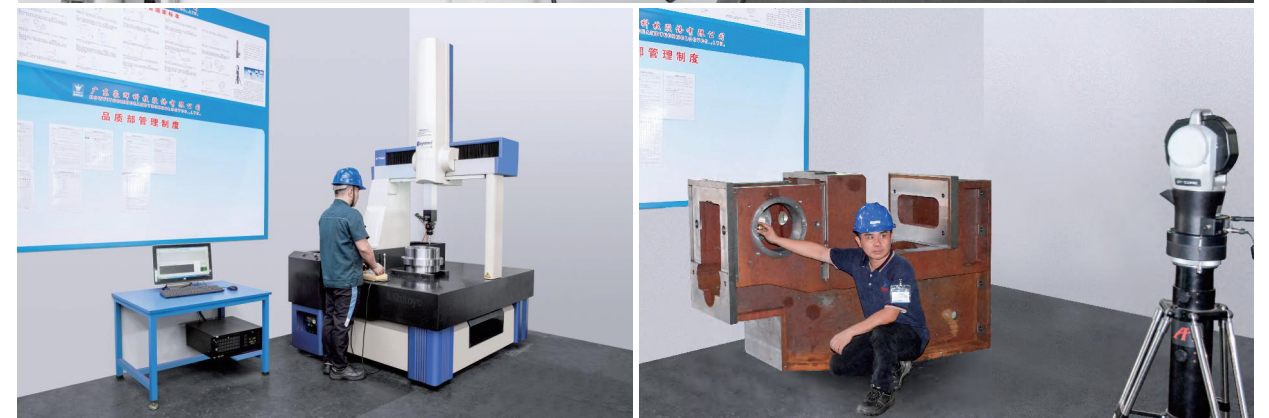
## Innovation begins with Exquisite craftsmanship 创新始于--精湛的工艺

最好的产品来自于最好的加工设备。为了更好地控制质量和生产周期，我司高速冲床80%以上的零配件都在自己车间加工完成。

Best products are born from best equipments. With the purpose of quality and production cycle controlling, more than 80% of press parts are finished in Howfit workshop.

# Advantage- Advanced testing equipment 优势--先进的检测设备

引入先进技术及设备，配以完善的检测手段，使产品精益求精。  
The quality control centre is being served with advanced testing equipment and professional monitor methods.



品质是企业的立足之本，优质的产品是企业的核心竞争力，豪辉为了制造高品质、高精度的产品，从进料到制造再到出货检验，严格把控制造过程中的每一道关口，确保每一台冲床的品质：

- (1) 我司冲床所有铸件零件均经过时效处理，粗加工后经振动时效处理，再精加工，这样减小和均化残余应力，使冲床能保持动态稳定性，提高了零件的抗变形能力。
- (2) 采用美国API公司的激光跟踪检测仪，对大型零配件床身、滑座进行质量检测，进一步提升了产品的质量。
- (3) 采用日本三丰三坐标检测仪对精度要求较高的零部件进行质量检测，为高精度零部件的品质提供保障。
- (4) 采用瑞士TRIMOS二次元检测仪配合大理石平台对小零配件进行全检，严格把控每一个环节。
- (5) 采用日本RIKEN下死点检测仪，对冲床进行下死点稳定性能的检测。
- (6) 采用日本RIKEN吨位检测仪，检测冲床冲压能力。

Quality is the foundation of an enterprise, and high quality products are the core competitiveness of an enterprise. In order to manufacture high quality and high precision products, HOWFIT strictly controls every gate in the manufacturing process from feeding to manufacturing to shipping inspection to ensure the quality of each punch press.

- (1) All the cast parts of our punch presses are treated with aging, and after rough machining, they are treated with vibration aging and then finish machining, so as to reduce and homogenize the residual stress, so that the punch press can maintain dynamic stability and improve the anti-deformation ability of the parts.
- (2) Adopting the laser tracking tester from API, USA, to inspect the quality of large spare parts bed and slide, which further improves the quality of the products.
- (3) Adopting Japan Mitutoyo coordinate tester for quality inspection of parts with high precision requirements, which provides guarantee for the quality of high precision parts.
- (4) Adopt Swiss TRIMOS secondary tester with marble platform for full inspection of small parts, strictly control every link.
- (5) Adopt Japan RIKEN BDC monitor to test the stability performance of the BDC of the press machine.
- (6) Adopt Japan RIKEN tonnage tester to test the press capacity of press machine.



# Advantage- Our honor 优势--我们的荣誉



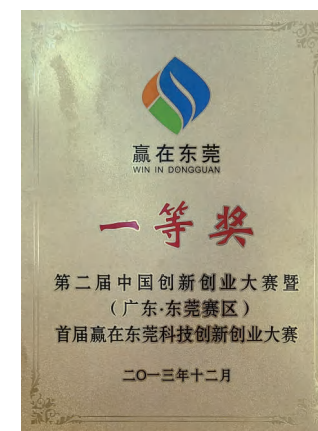
**3件**  
发明专利证书  
Invention Patent Certificate

**4件**  
软件著作权  
Software Copyright

**26件**  
实用新型专利  
Utility Model Patent

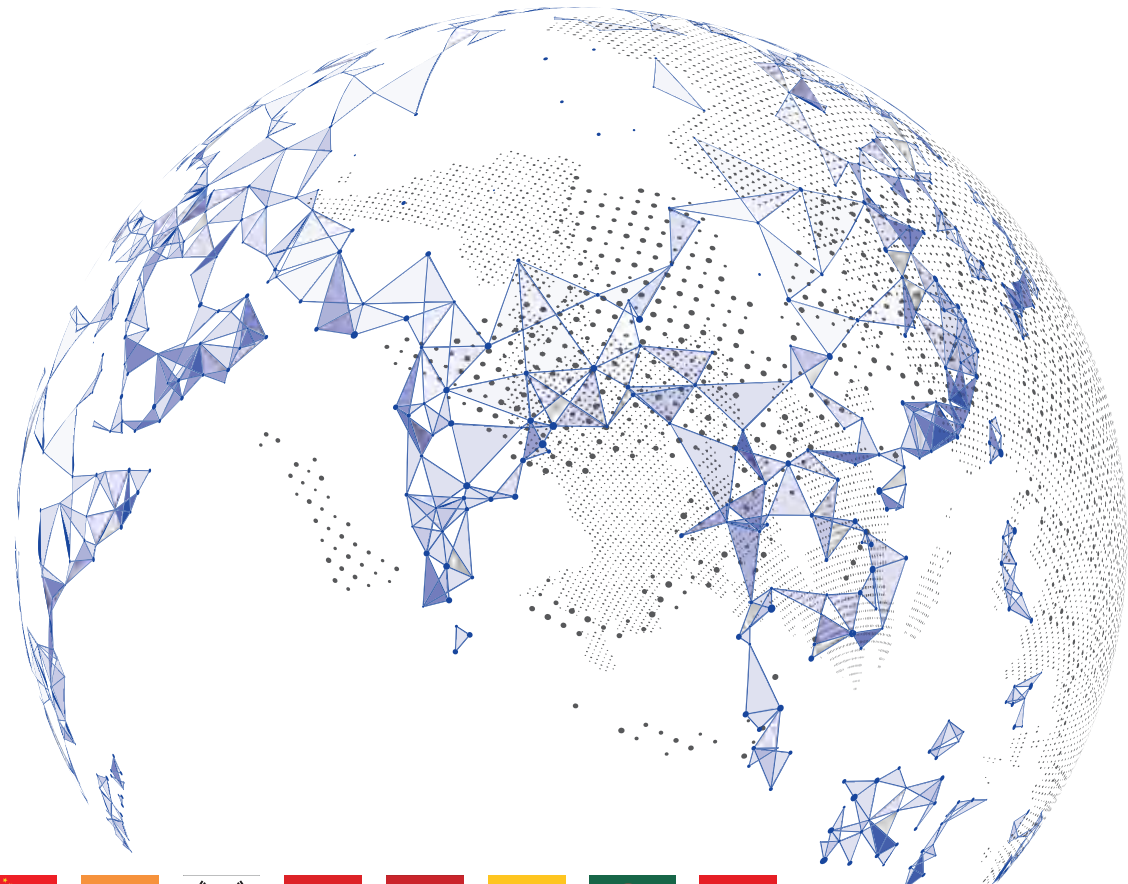
**3件**  
外观专利  
Appearance Patent

荣誉，意味着肩负更大的责任，印证了我们昨日的辉煌，记录了我们今日的收获，也确定了我们明日新的起点。  
Honor, means greater responsibility, confirms our yesterday's brilliant, we recorded today's harvest, but also to determine our new starting point tomorrow.



# TOGETHER WE CAN MOVE FORWARD WITH WISDOM

## 同心共进 智行未来



### 倾听客户需求 Listen to customer needs

每个行业都对他们的合作伙伴有着特殊的要求，每时每刻，精益求精。  
赢取客户满意度的第一步就是理解客户需求。为此，当我们承接新客户的时候，首先要完整而准确地倾听客户的需求。  
不断革新技术知识和我们整个企业团队的创新能力为我们具有最佳客户定位、量身定制的产品和以市场为导向的解决方案提供了强有力的保证。

Each industry has its special requirements for their partners. They keep improving and pursuing perfection.  
The first step to win user's satisfaction is to learn what they want. So we promised to listen to their needs at first when we meet the new clients.  
The knowledge of innovative technologies and the innovative capabilities of our entire enterprise team provide a strong guarantee that we have the best customer positioning, tailored products and market driven solutions.



**99%**  
满意服务  
SATISFACTORY  
SERVICE



**12个月**  
保修时间  
WARRANTY



**24小时**  
在线服务  
ON-LINE SERVICE

 神驰机电	 木林森照明	 得润电子
 日彩	 奕东电子	 BROAD-OCEAN
 星徽精密	 CG Power and Industrial Solutions Limited	 安费诺
 汇川技术	 利欧	
		 伟星股份
		 BLUECOLOUR

最佳的用户体验是我们最终目的  
The best customer experience is our ultimate goal

# HC-16T/25T/45T

C-type Three Guide Column  
High-speed Precision Press  
C型三圆导柱高速精密冲床

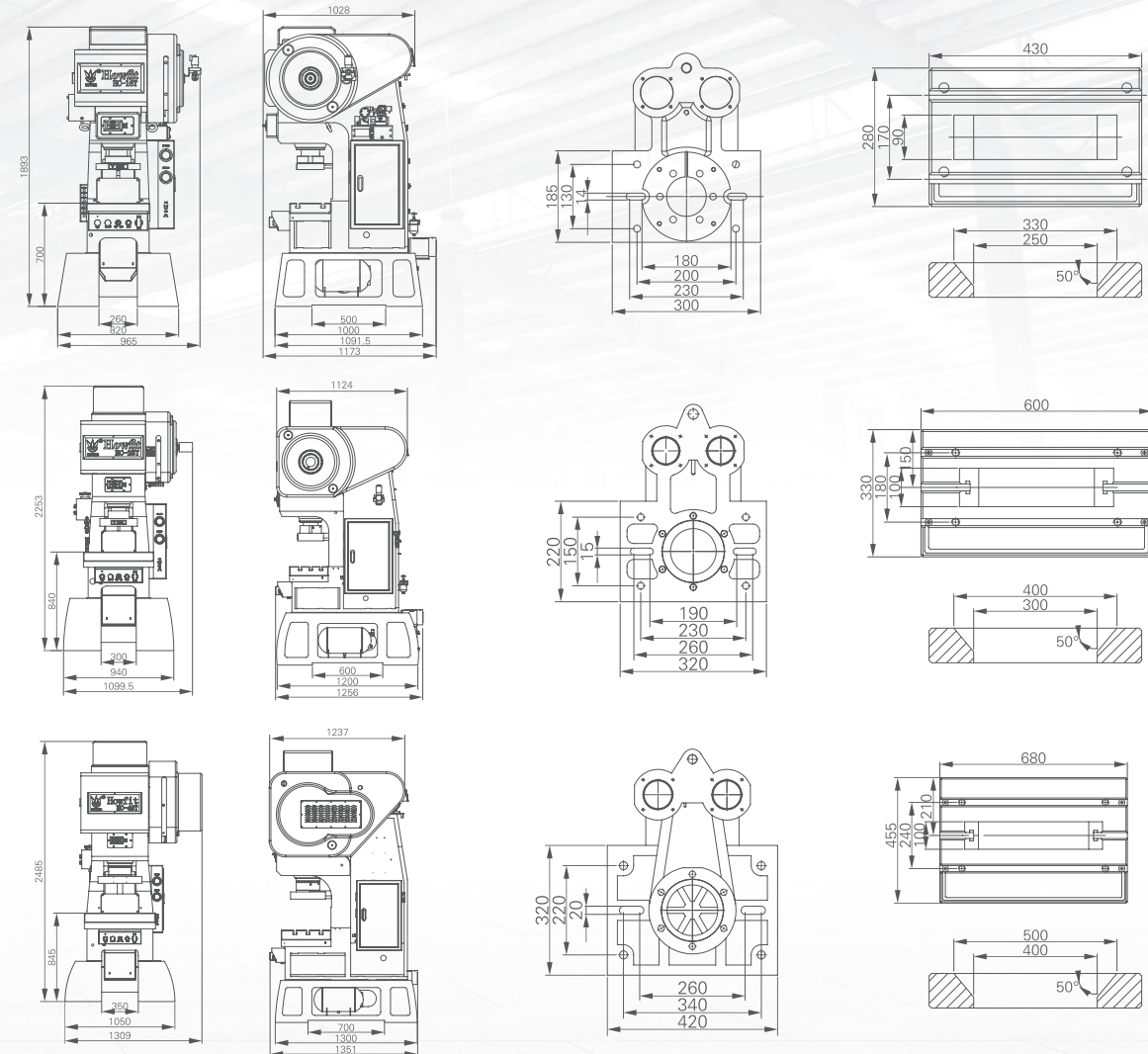


## 主要特点 Main Features

1. 床身采用高强度铸铁，经内部应力消除，使材质稳定、精度不变、最适合连续冲压生产。
2. 双导柱、一中心柱结构，采用加入特殊合金的铜套取代传统的滑板结构，使动摩擦减至最低，配合了强制润滑使热变形减到最小而精度达到最高。
3. 可选配反侧动平衡装置减低震动，使冲床拥有最佳的精度和稳定性。
4. 调模配合模高显示器及油压锁固装置，方便调模操作。
5. 人机界面微电脑控制，数值、故障监控系统屏幕显示操作方便。

1. Manufactured from high tensile cast iron, stress relieved for maximum rigidity and long term accuracy. It's the best for continuous production.
2. Double pillars and one plunger guide structure, manufactured from copper bush instead of traditional board for minimize friction. Work with forced lubrication to minimize thermal strain life of the frame, upgrade stamping quality and extend service life of the machine.
3. Balancer device for optional to reduce vibration, make press more precision and stable.
4. It's more convenient to adjust the die with the die height indicator and the hydraulic locking device.
5. HMI is controlled by microcomputer. Display value and fault monitoring system. It is easy to operate.

## 外形尺寸 Dimension



## 技术参数 Main Technical Parameters

机型	Model		HC-16T			HC-25T			HC-45T		
加压能力	Capacity	KN	160			250			450		
行程	Stroke length	MM	20	25	30	20	30	40	30	40	50
最高转速	Maximum SPM	SPM	800	700	600	700	600	500	700	600	500
最低转速	Minimum SPM	SPM	200	200	200	200	200	200	200	200	200
闭模高度	Die height	MM	185-215	183-213	180-210	185-215	180-210	175-205	210-240	205-235	200-230
模高调整量	Die height adjustment	MM	30			30			30		
滑块尺寸	Slider area	MM	300 × 185			320 × 220			420 × 320		
工作台尺寸	Bolster area	MM	430 × 280 × 70			600 × 330 × 80			680 × 455 × 90		
工作台落料孔	Bolster opening	MM	90 × 330			100 × 400			100 × 500		
主马达	Main motor	KW	4.0kw × 4P			4.0kw × 4P			5.5kw × 4P		
精度	Accuracy		JIS特级 / JIS Special grade			JIS特级 / JIS Special grade			JIS特级 / JIS Special grade		
总重	Total Weight	TON	1.95			3.6			4.8		

# HC-65T

C-type Three Guide Column  
High-speed Precision Press  
C型三圆导柱高速精密冲床

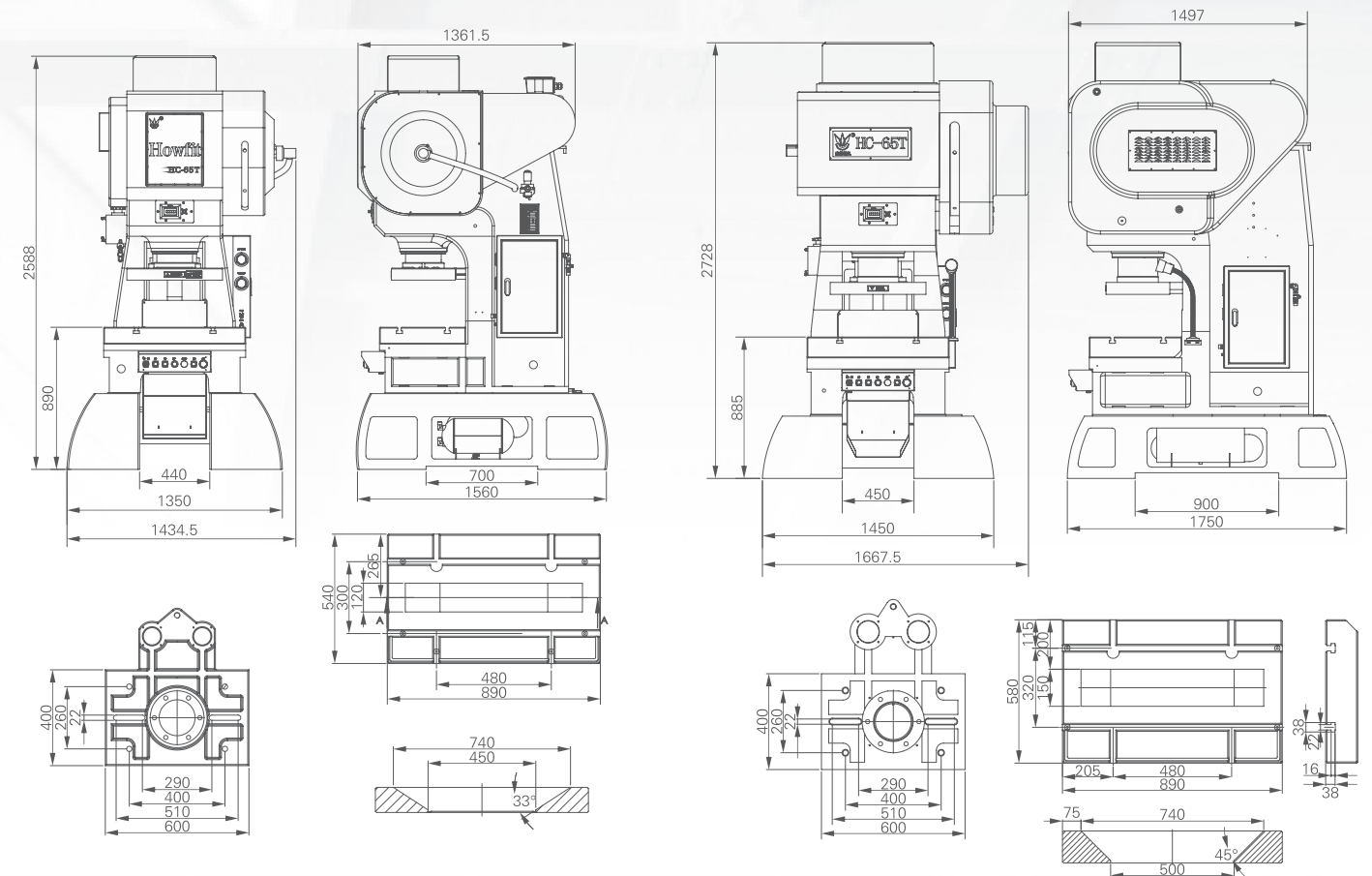


## 主要特点 Main Features

1. 床身采用高强度铸铁，经内部应力消除，使材质稳定、精度不变、最适合连续冲压生产。
2. 双导柱、一中心柱结构，采用加入特殊合金的铜套取代传统的滑板结构，使动摩擦减至最低，配合了强制润滑使热变形减到最小而精度达到最高。
3. 可选配反侧平衡装置减低震动，使冲床拥有最佳的精度和稳定性。
4. 调模配合模高显示器及油压锁固装置，方便调模操作。
5. 人机界面微电脑控制，数值、故障监控系统银幕显示操作方便。
6. 采用电动调模结构，配合模高指示器，方便模高调整。

1. Manufactured from high tensile cast iron, stress relieved for maximum rigidity and long term accuracy. It's the best for continuous production.
2. Double pillars and one plunger guide structure, manufactured from copper bush instead of traditional board for minimize friction. Work with forced lubrication to minimize thermal strain life of the frame, upgrade stamping quality and extend service life of the machine.
3. Balancer device for optional to reduce vibration, make press more precision and stable.
4. It's more convenient to adjust the die with the die height indicator and the hydraulic locking device.
5. HMI is controlled by microcomputer. Display value and fault monitoring system. It is easy to operate.
6. Adopt die height adjustment motor, with die height indicator, easy to adjust the die height.

## 外形尺寸 Dimension

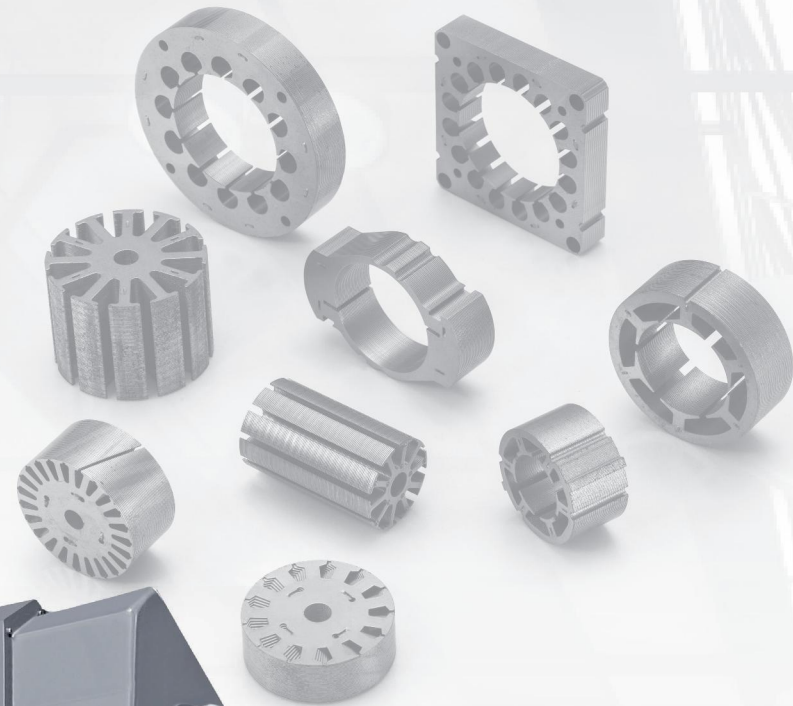


## 技术参数 Main Technical Parameters

机型	Model		HC-65T			HC-65T W		
加压能力	Capacity	KN	650			650		
行程	Stroke length	MM	30	40	50	30	40	50
最高转速	Maximum SPM	SPM	700	600	500	600	550	500
最低转速	Minimum SPM	SPM	200	200	200	200	200	200
闭模高度	Die height	MM	215-265	210-260	205-255	215-265	210-260	205-255
模高调整量	Die height adjustment	MM	50			50		
滑块尺寸	Slider area	MM	600 x 400			600 x 400		
工作台尺寸	Bolster area	MM	890 x 540 x 105			890 x 580 x 130		
工作台落料孔	Bolster opening	MM	120 x 740			150 x 740		
主马达	Main motor	KW	11kw x 4P			11kw x 4P		
精度	Accuracy		JIS特级 / JIS Special grade			JIS特级 / JIS Special grade		
总重	Total Weight	TON	7.5			9.2		

# HHC-85T

C-type Five Guide Column  
High-speed Precision Press  
C型五圆导柱高速精密冲床

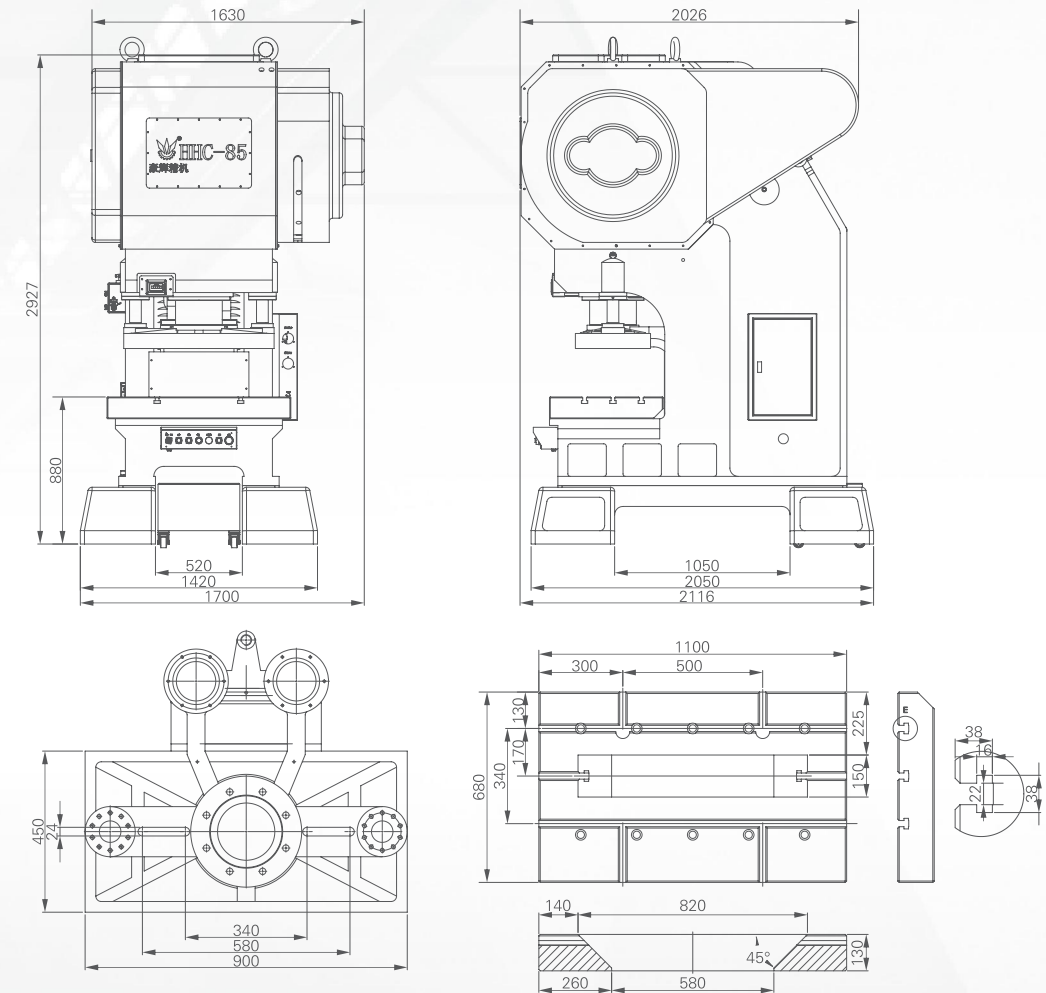


## 主要特点 Main Features

1. 床身采用高强度铸铁，经内部应力消除，使材质稳定、精度不变、最适合连续冲压生产。
2. 在传统滑块结构上增加滑块两侧固定导柱，使滑块抗偏载能力更好，减少单边磨损，适合长工序大模具使用。
3. 调模配合模高显示器及油压锁固装置，方便调模操作。
4. 人机界面微电脑控制，数值、故障监控系统银幕显示操作方便。
5. 采用电动调模结构，配合模高指示器，方便模高调整。

1. The bed is made of high strength cast iron with internal stress relief, which makes the material stable and accuracy unchanged and most suitable for continuous stamping production.
2. The fixed guide pillars on both sides of the slider are added to the traditional slider structure to make the slider have better resistance to deflection load and reduce the wear on one side, which is suitable for the use of large dies in long processes.
3. The die adjustment is equipped with die height display and hydraulic locking device, which is convenient for die adjustment operation.
4. Human-machine interface microcomputer control, value, fault monitoring system screen display for easy operation.
5. Adopt die height adjustment motor, with die height indicator, easy to adjust the die height.

## 外形尺寸 Dimension



## 技术参数 Main Technical Parameters

机型	Model	HC-85T		
加压能力	Capacity	KN	850	
行程	Stroke length	MM	30	50
最高转速	Maximum SPM	SPM	600	500
最低转速	Minimum SPM	SPM	200	200
闭模高度	Die height	MM	315-365	305-355
模高调整量	Die height adjustment	MM	50	
滑块尺寸	Slider area	MM	900 × 450	
工作台尺寸	Bolster area	MM	1100 × 680 × 130	
工作台落料孔	Bolster opening	MM	150 × 820	
主马达	Main motor	KW	18.5kw × 4P	
精度	Accuracy		JIS特级 / JIS Special grade	
总重	Total Weight	TON	14	

# DHS-30T/45T

Gantry Frame Type Five Guide Column  
High-speed Precision Press  
五圆导柱龙门高速精密冲床

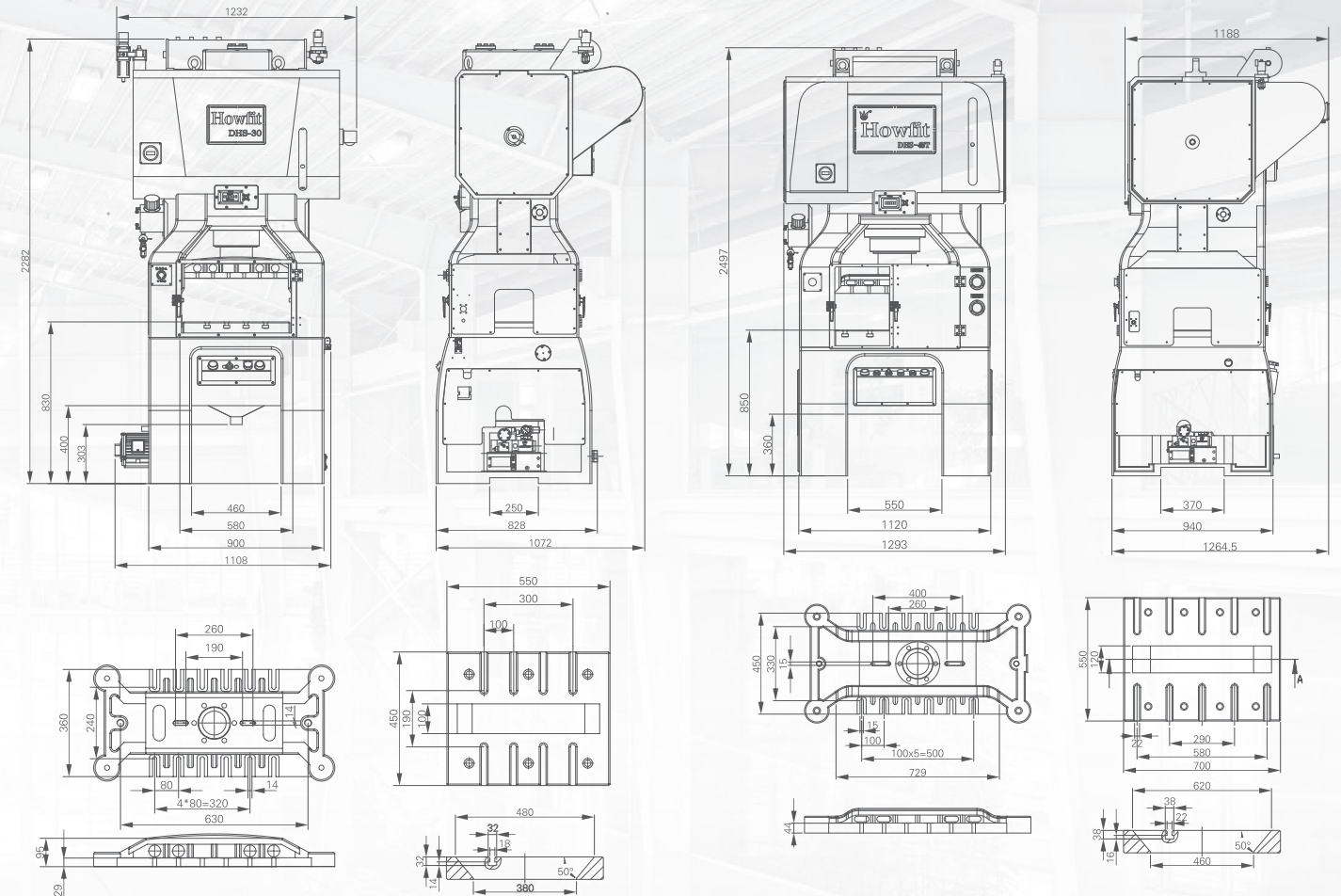


## 主要特点 Main Features

1. 是一种比传统C型更好的冲床，结构一体式龙门框架床身，结构更加稳定。
2. 导柱与滑块一体式结构，滑块动作更加稳定，精度保持更好。
3. 高压强制润滑，机身内部无油管设计，防止油路断裂，延长使用寿命。
4. 全新的防漏油设计，能更好的防止漏油发生。
5. 人机界面微电脑控制，大荧幕显示，操作方便，简洁。

1. It is a better press machine than the traditional C type, the structure of one-piece gantry frame bed, the structure is more stable.
2. Integrated structure of guide pillar and slider, more stable slider action and better retention accuracy.
3. High pressure forced lubrication, no oil pipe design inside the body to prevent oil circuit breakage and prolong service life.
4. The new oil leakage prevention design can better prevent oil leakage from occurring.
5. Human-machine interface microcomputer control, large screen display, simple and convenient operation.

## 外形尺寸 Dimension



## 技术参数 Main Technical Parameters

机型	Model	DHS-30T			DHS-45T			
加压能力	Capacity	KN	300			450		
行程	Stroke length	MM	20	25	30	20	30	40
最高转速	Maximum SPM	SPM	800	700	650	700	600	500
最低转速	Minimum SPM	SPM	200	200	200	200	200	200
闭模高度	Die height	MM	185-215	183-213	180-210	215-245	210-240	205-235
模高调整量	Die height adjustment	MM	30			30		
滑块尺寸	Slider area	MM	600 x 300			720 x 450		
工作台尺寸	Bolster area	MM	550 x 450 x 80			700 x 500		
工作台落料孔	Bolster opening	MM	100 x 480			120 x 620		
主马达	Main motor	KW	3.7kw x 4P			7.5kw x 4P		
精度	Accuracy		JIS特级 / JIS Special grade			JIS特级 / JIS Special grade		
总重	Total Weight	TON	3.6			5.6		

# MDH-30T/45T/65T

4 Post Guide and 2 Plunger Guide Gantry Type Precision Press  
六圆导柱龙门精密高速冲床

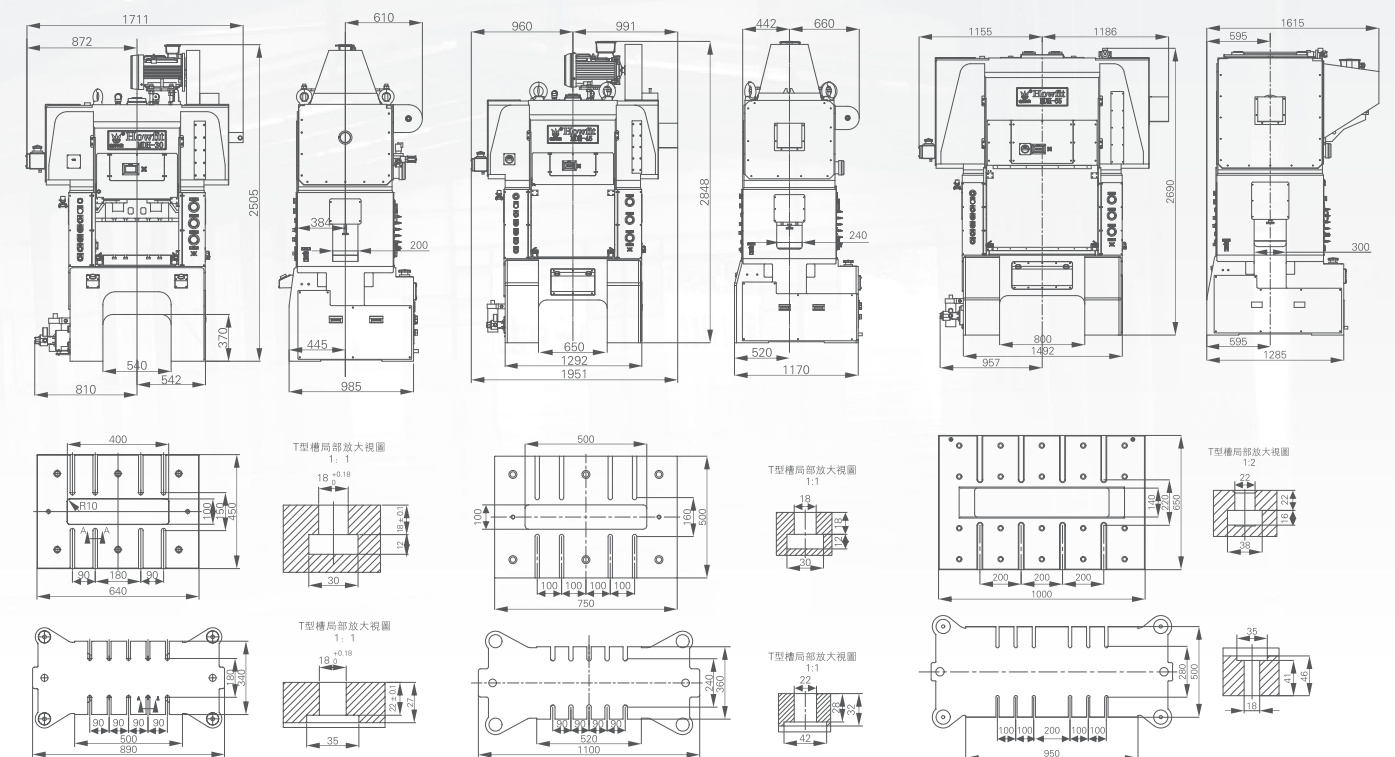


## 主要特点 Main Features

1. 床身采用高强度铸铁，精准控温回火后通过自然漫长时间消除工件内部应力，使床身工件性能达到最佳状态。
2. 分体式龙门构造，防止了负载时机身的开口问题，实现了高精度产品的加工。
3. 曲柄轴采用合金钢材锻打成型后由四轴日本机床加工，合理的加工工艺及装配工艺保证机床在运行过程中形变小，结构稳定。
4. 机床采用六圆导柱式导向结构，合理控制各工件之间位移形变。加上强制供油润滑系统，使机床在长时间运转和偏载负荷工况下的细微热变形降至最低，保证长时间高精度产品加工。
5. 人机界面微电脑控制，实现操作的可视化管理，产品数量，机床状态一目了然(后续将采用中央数据处理系统，一部屏幕知晓所有机床工作状态，质量，数量及其它数据)。

1. The press frame adopts high-strength cast iron, and the internal stress of the workpiece is eliminated through natural long time after precise temperature control and tempering, so that the performance of the bed workpiece reaches the best state.
2. The split gantry structure prevents the problem of opening of the machine body during loading and realizes the processing of high precision products.
3. The crank shaft is forged and shaped by alloy steel and then machined by four-axis Japanese machine tool. The reasonable machining process and assembly process ensure that the machine tool has small deformation and stable structure during operation.
4. The press adopts 4 post guide and 2 plunger guide guiding structure, which can reasonably control the displacement deformation between workpieces. Together with the forced oil supply lubrication system, the machine tool can minimize the slight thermal deformation under long time operation and partial load condition, which can guarantee the long time high precision product processing.
5. Human-machine interface microcomputer control, to achieve the visual management of the operation, the number of products, machine status at a glance (the subsequent adoption of a central data processing system, a screen to know all machine work status, quality, quantity and other data).

## 外形尺寸 Dimension



## 技术参数 Main Technical Parameters

机型	Model		MDH-30T				MDH-45T				MDH-65T			
加压能力	Capacity	KN	300				450				650			
行程	Stroke length	MM	16	20	25	30	20	25	30	40	20	30	40	50
最高转速	Maximum SPM	SPM	1000	1000	900	900	1000	1000	900	700	700	600	500	400
最低转速	Minimum SPM	SPM	200	200	200	200	200	200	200	200	200	200	200	200
闭模高度	Die height	MM	240	240	240	235	270	265	265	260	260	255	250	245
模高调整量	Die height adjustment	MM	50				50				50			
滑块尺寸	Slider area	MM	640x340				750x360				950x500			
工作台尺寸	Bolster area	MM	640x450				750x500				1000x650			
底座落料孔	Bed opening	MM	480x120				600x120				800x200			
工作台落料孔	Bolster opening	MM	400x100				500x100				800(上)x650(下)x140			
主马达	Main motor	KW	7.5x4P				15x4P				18.5x4P			
精度	Accuracy		JIS特級 / JIS Special grade				JIS特級 / JIS Special grade				JIS特級 / JIS Special grade			
上模重量	Upper Die Weight	KG	MAX 60				MAX 120				MAX 300			
总重	Total Weight	TON	5				8				14			

# S-125W

Crank Type-Eight Side Needle Bearing Series  
曲轴式八面导轨系列

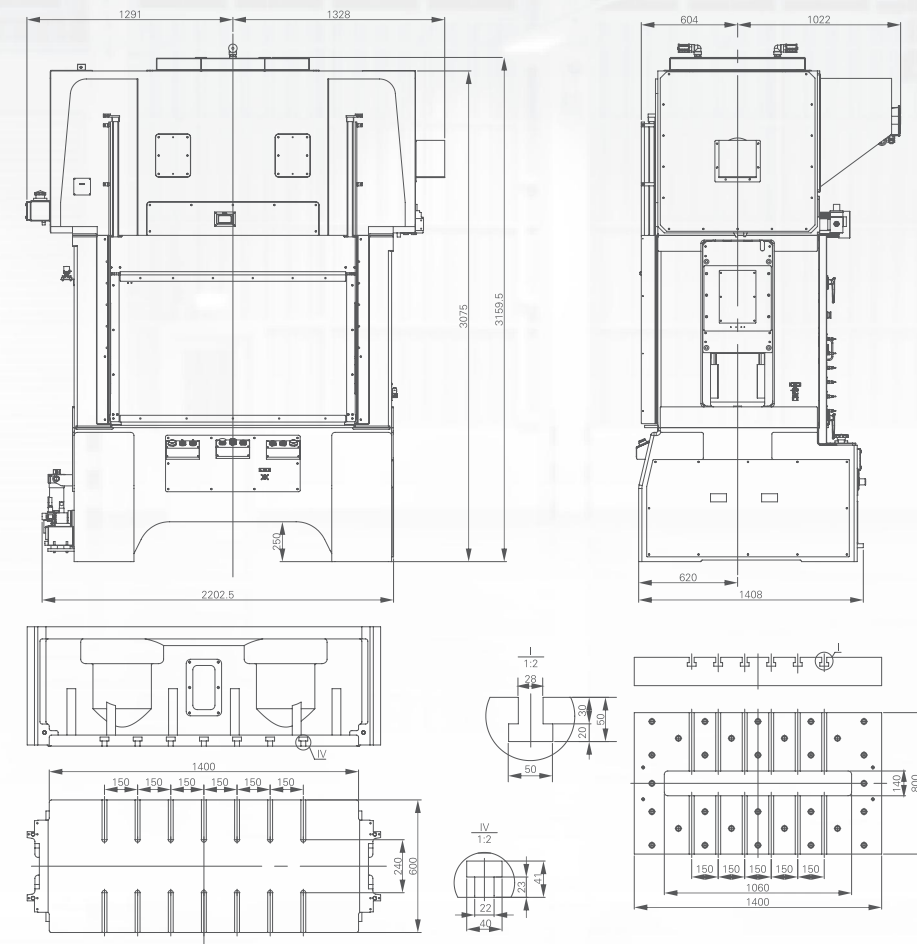


## 主要特点 Main Features

1. 该机是三段式大螺杆拧紧的龙门曲柄式冲压机。在拥有高刚性的同时，应用范围广；可实现从连接器到一般小型零部件的中低速精密加工。
2. 该机采用了8面滑块的导轨结构，可承载偏心载荷。
3. 运转操作采用可提高作业效率的触摸屏简易操作方式。
4. 闭模高度调整采用0.01mm数显，简单方便。
5. 采用双连杆，抗偏心载荷能力强，兼顾精度和生产效率。

1. This machine is a gantry crank type press with three stages of large screw tightening. Wide range of applications while having high rigidity. It can realize low to medium speed precision stamping from connectors to general small parts.
2. Adopts eight-side needle bearing guiding, further improve the eccentric load capacity of the slider.
3. Easy operation by touch screen for efficient operation.
4. 0.01mm digital display is adopted for the height adjustment of the closed die, which is simple and convenient.
5. Adopt double connecting rod, which has strong ability to resist eccentric load, taking into account the accuracy and production efficiency.

## 外形尺寸 Dimension



## 技术参数 Main Technical Parameters

机型	Model	S-125W			
加压能力	Capacity	KN	1250		
行程	Stroke length	MM	20	30	50
最高转速	Maximum SPM	SPM	450	400	300
最低转速	Minimum SPM	SPM	180	180	180
闭模高度	Die height	MM	320-370	315-365	310-360
模高调整量	Die height adjustment	MM		50	
滑块尺寸	Slider area	MM	1400 × 600		
工作台尺寸	Bolster area	MM	1400 × 800		
底座落料孔	Bed opening	MM	1100 × 120		
工作台落料孔	Bolster opening	MM	1060 × 140		
主马达	Main motor	KW	22 × 4P		
精度	Accuracy		特级 Special		
上模重量	Upper Die Weight	KG	MAX 350		
总重	Total Weight	TON	18		



# DDL-125T/220T

HOWFIT High Speed Precision Press  
豪辉高将精机

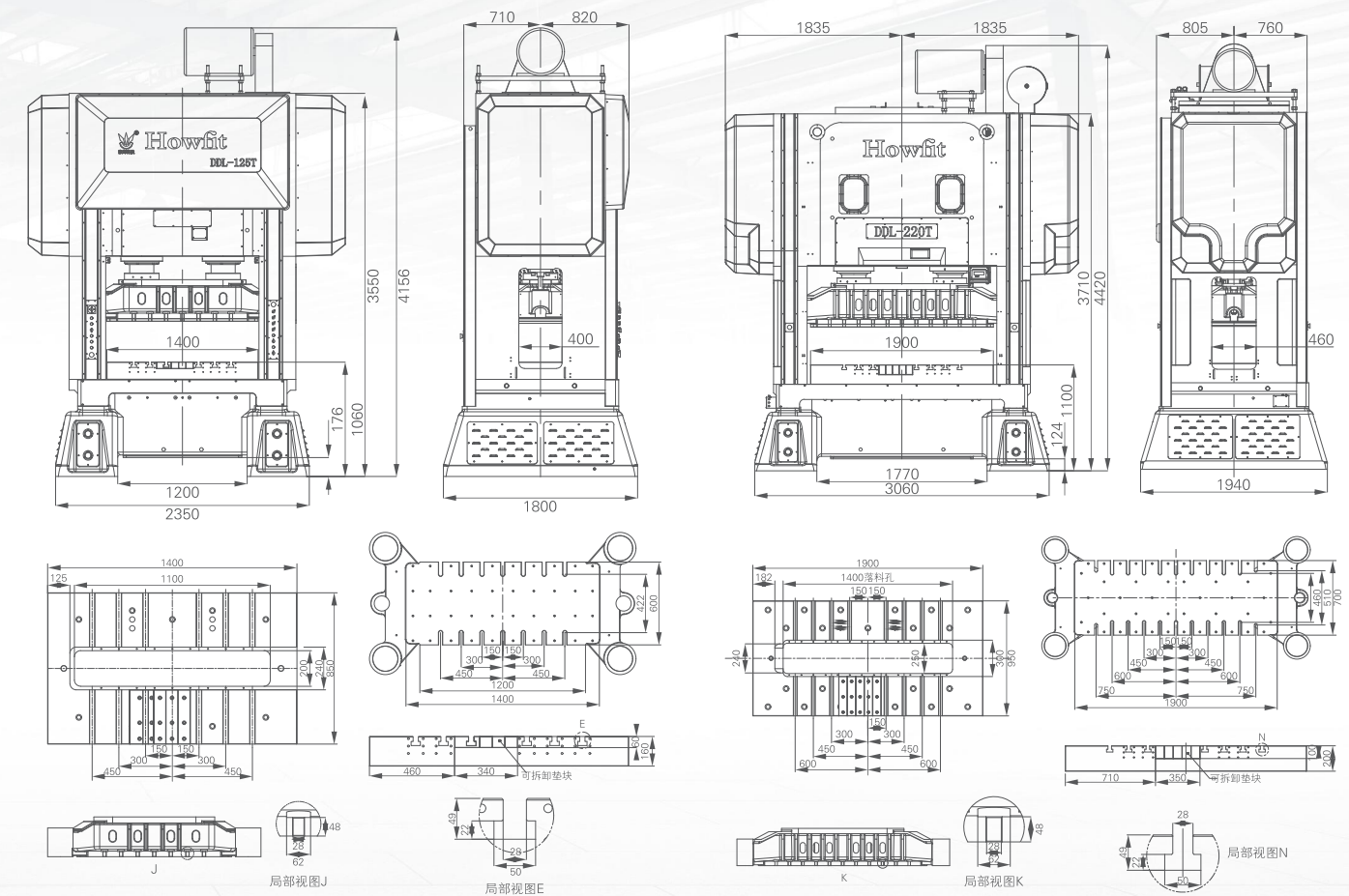


## 主要特点 Main Features

1. 床身采用高强度铸铁，精准控温回火后通过自然漫长时间消除工件内部应力，使床身工件性能达到最佳状态。
2. 床身机架的连接，使用机座螺栓紧固并使用油压动力，使机架结构预压，大幅提升机架刚性。
3. 优异的动态平衡设计，将震动与噪音降到最低，并可确保模具寿命。
4. 曲轴采用NiCrMO合金钢，经过热处理、研磨等精密加工。
5. 滑块导筒与导杆间采用无间隙轴向轴承配合加长型导筒，使动、静态精度超越特级精度，亦使冲压模具寿命大幅提升。
6. 采用强制润滑冷却系统，降低机座热应变，确保冲压品质，延长机械寿命。
7. 人机界面微电脑控制，实现操作的可视化管理，产品数量，机床状态一目了然（后续将采用中央数据处理系统，一部屏幕知晓所有机床工作状态，质量，数量及其他数据）。

1. The frame is made of high strength cast iron, which eliminates the internal stress of the workpiece through natural long time after precise temperature control and tempering, so that the performance of the workpiece of the frame reaches the best state.
2. The connection of the bed frame is fastened by the Tie Rod and the hydraulic power is used to prepress the frame structure and greatly improve the rigidity of the frame.
3. Excellent dynamic balance design, minimize vibration and noise, and ensure the life of the die.
4. Crankshaft adopts NiCrMO alloy steel, after heat treatment, grinding and other precision machining.
5. The non-clearance axial bearing is used between the slide guide cylinder and the guide rod and match with the the extended guide cylinder, so that the dynamic and static accuracy exceeds the special grade precision, and the life of the stamping die is greatly improved.
6. Adopt the forced lubrication cooling system, reduce the heat strain of the frame, ensure the stamping quality, prolong the press life.
7. The man-machine interface is controlled by microcomputer to realize visual management of operation, product quantity and machine tool status at a clear sight (central data processing system will be adopted in the future, and one screen will know the working status, quality, quantity and other data of all machine tools).

## 外形尺寸 Dimension



## 技术参数 Main Technical Parameters

机型	Model		DDL-125T	DDL-220T
加压能力	Capacity	KN	1250	2200
行程	Stroke length	MM	30	30
最高转速	Maximum SPM	SPM	700	600
最低转速	Minimum SPM	SPM	150	150
闭模高度	Die height	MM	360-410	370-420
模高调整量	Die height adjustment	MM	50	50
滑块尺寸	Slider area	MM	1400 × 600	1900 × 700
工作台尺寸	Bolster area	MM	1400 × 850	1900 × 950
底座落料孔	Bed opening	MM	1100 × 300	1500 × 300
工作台落料孔	Bolster opening	MM	1100 × 200	1400 × 250
主马达	Main motor	KW	37 × 4P	45 × 4P
精度	Accuracy		JIS特级 / JIS Special grade	JIS特级 / JIS Special grade
总重	Total Weight	TON	27	40

# DDL-300T/360T

HOWFIT High Speed Precision Press

豪辉高将精机

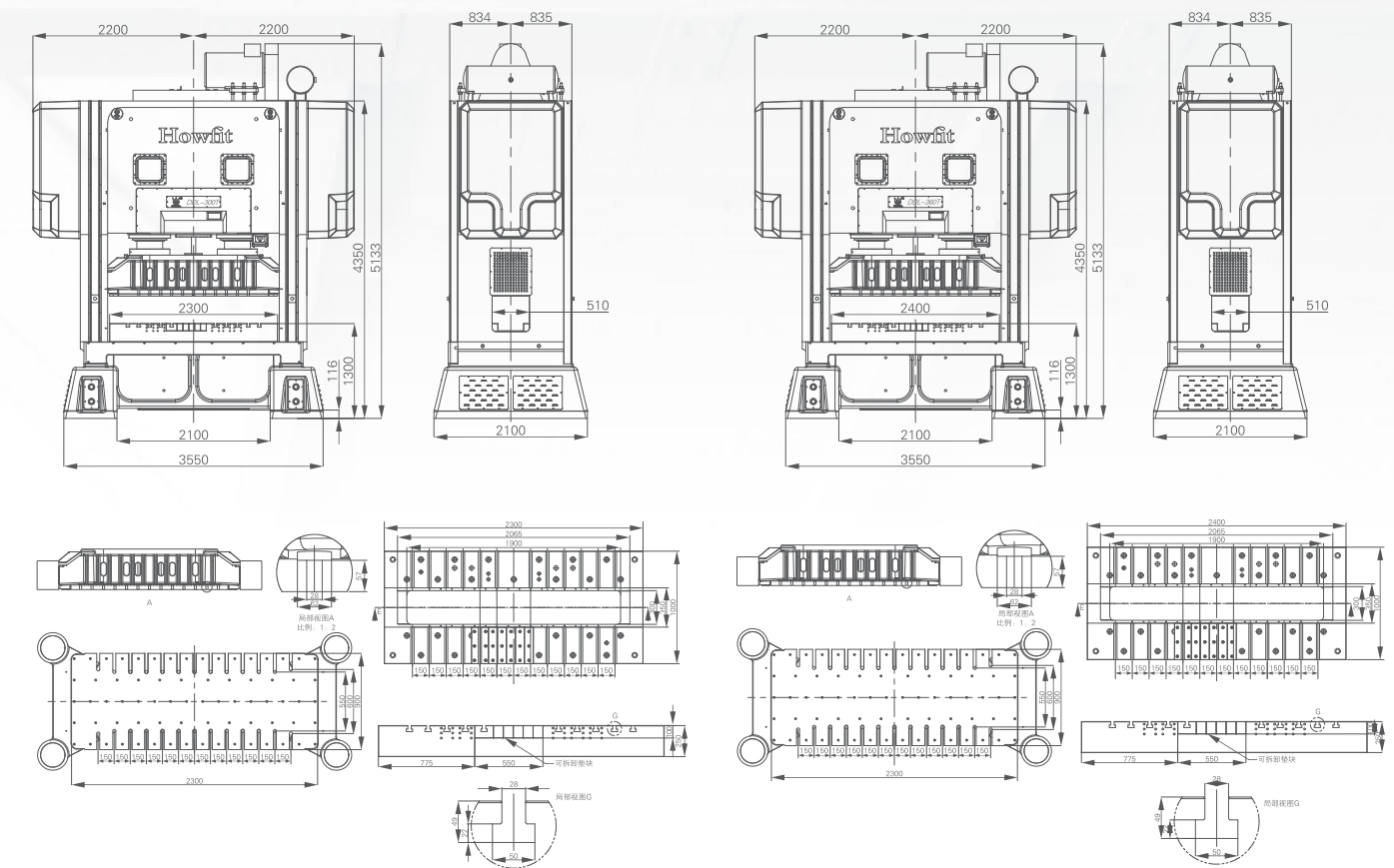


## 主要特点 Main Features

1. 床身采用高强度铸铁，精准控温回火后通过自然漫长时间消除工件内部应力，使床身工件性能达到最佳状态。
2. 床身机架的连接，使用机座螺栓紧固并使用油压动力，使机架结构预压，大幅提升机架刚性。
3. 优异的动态平衡设计，将震动与噪音降到最低，并可确保模具寿命。
4. 曲轴采用NiCrMO合金钢，经过热处理、研磨等精密加工。
5. 滑块导轨与导杆间采用无间隙轴间配合加长型导筒，使动、静态精度超越特级精度，亦使冲压模具寿命大幅提升。
6. 采用强制润滑冷却系统，降低机座热应变，确保冲压品质，延长机械寿命。
7. 人机界面微电脑控制，实现操作的可视化管理，产品数量，机床状态一目了然（后续将采用中央数据处理系统，一部屏幕知晓所有机床工作状态，质量，数量及其他数据）。

1. The frame is made of high strength cast iron, which eliminates the internal stress of the workpiece through natural long time after precise temperature control and tempering, so that the performance of the workpiece of the frame reaches the best state.
2. The connection of the bed frame is fastened by the Tie Rod and the hydraulic power is used to prepress the frame structure and greatly improve the rigidity of the frame.
3. Excellent dynamic balance design, minimize vibration and noise, and ensure the life of the die.
4. Crankshaft adopts NiCrMO alloy steel, after heat treatment, grinding and other precision machining.
5. The non-clearance axial bearing is used between the slide guide cylinder and the guide rod and match with the the extended guide cylinder, so that the dynamic and static accuracy exceeds the special grande precision, and the life of the stamping die is greatly improved.
6. Adopt the forced lubrication cooling system, reduce the heat strain of the frame, ensure the stamping quality, prolong the press life.
7. The man-machine interface is controlled by microcomputer to realize visual management of operation, product quantity and machine tool status at a clear sight (central data processing system will be adopted in the future, and one screen will know the working status, quality, quantity and other data of all machine tools).

## 外形尺寸 Dimension

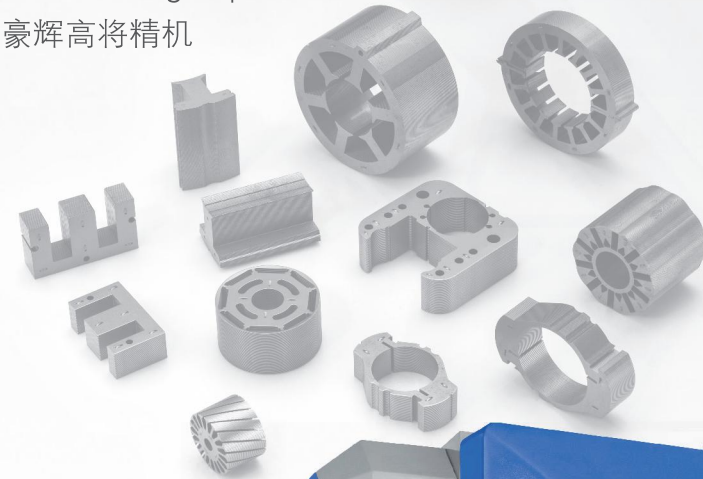


## 技术参数 Main Technical Parameters

机型	Model		DDL-300T	DDL-360T
加压能力	Capacity	KN	3000	3600
行程	Stroke length	MM	30	30
最高转速	Maximum SPM	SPM	450	400
最低转速	Minimum SPM	SPM	100	100
闭模高度	Die height	MM	400-450	400-450
模高调整量	Die height adjustment	MM	50	50
滑块尺寸	Slider area	MM	2300 × 900	2300 × 900
工作台尺寸	Bolster area	MM	2300 × 1000	2400 × 1000
底座落料孔	Bed opening	MM	2000 × 350	2000 × 350
工作台落料孔	Bolster opening	MM	1900 × 300	1900 × 300
主马达	Main motor	KW	55 × 4P	75 × 4P
精度	Accuracy		JIS特级 / JIS Special grade	JIS特级 / JIS Special grade
总重	Total Weight	TON	65	66

# DDH-85T/125T

HOWFIT High Speed Precision Press  
豪辉高将精机

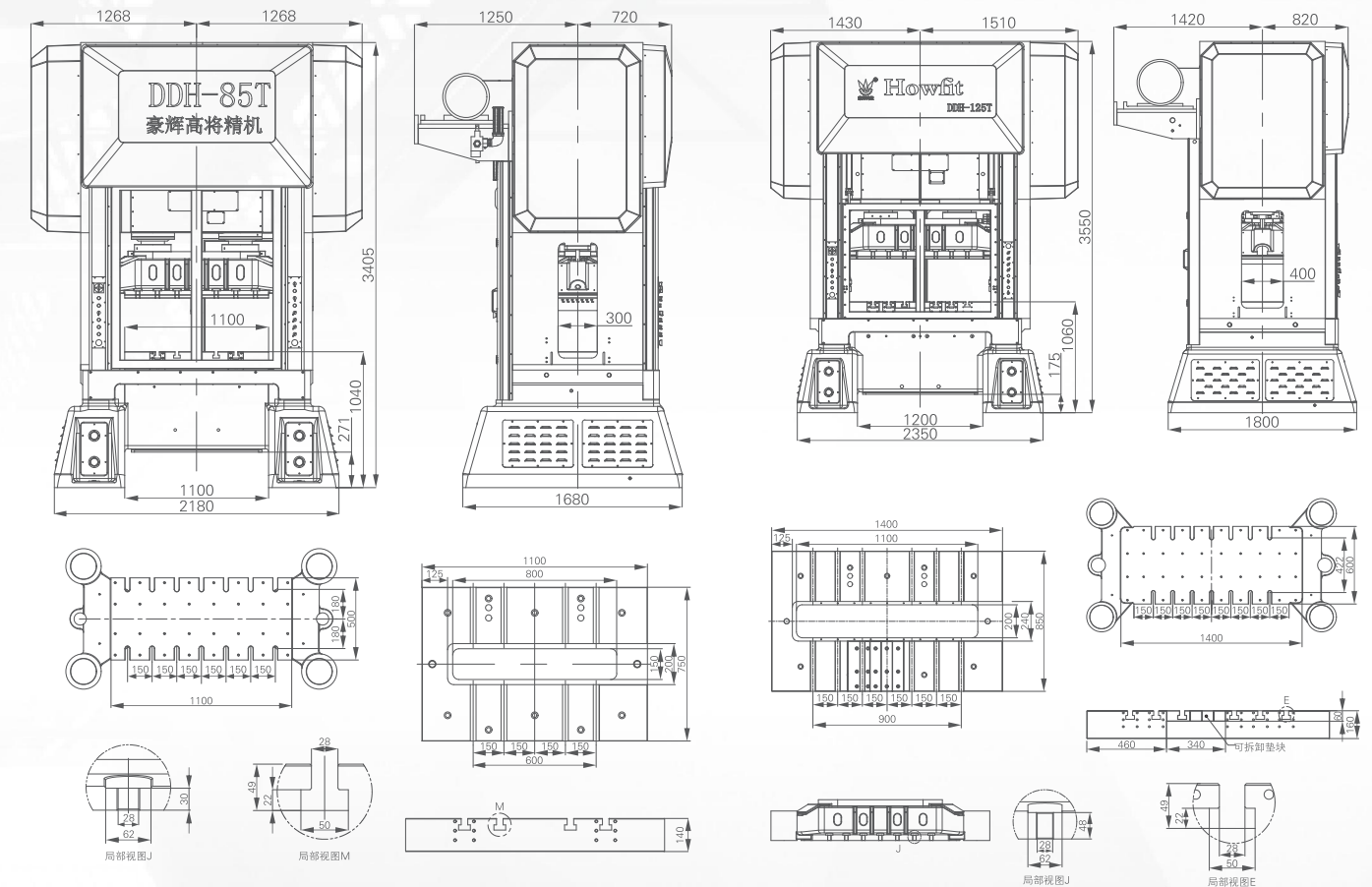


## 主要特点 Main Features

1. 床身采用高强度铸铁，精准控温回火后通过自然漫长时间消除工件内部应力，使床身工件性能达到最佳状态。
2. 床身机架的连接，使用机座螺栓紧固并使用油压动力，使机架结构预压，大幅提升机架刚性。
3. 强力灵敏的分离式离合器及刹车器，确保定位精密，制动灵敏。
4. 优异的动态平衡设计，将震动与噪音降到最低，并可确保模具寿命。
5. 曲轴采用NiCrMO合金钢，经过热处理、研磨等精密加工。
6. 滑块导筒与导杆间采用无间隙轴向轴承配合加长型导筒，使动、静态精度超越特级精度，亦使冲压模具寿命大幅提升。
7. 采用强制润滑冷却系统，降低机座热应变，确保冲压品质，延长机械寿命。
8. 人机界面微电脑控制，实现操作的可视化管理，产品数量，机床状态一目了然（后续将采用中央数据处理系统，一部屏幕知晓所有机床工作状态，质量，数量及其他数据）。

1. The frame is made of high strength cast iron, which eliminates the internal stress of the workpiece through natural long time after precise temperature control and tempering, so that the performance of the workpiece of the frame reaches the best state.
2. The connection of the bed frame is fastened by the Tie Rod and the hydraulic power is used to prepress the frame structure and greatly improve the rigidity of the frame.
3. Powerful and sensitive separation clutch and brake ensure precise positioning and sensitive braking.
4. Excellent dynamic balance design, minimize vibration and noise, and ensure the life of the die.
5. Crankshaft adopts NiCrMO alloy steel, after heat treatment, grinding and other precision machining.
6. The non-clearance axial bearing is used between the slide guide cylinder and the guide rod and match with the the extended guide cylinder, so that the dynamic and static accuracy exceeds the special grande precision, and the life of the stamping die is greatly improved.
7. Adopt the forced lubrication cooling system, reduce the heat strain of the frame, ensure the stamping quality, prolong the press life.
8. The man-machine interface is controlled by microcomputer to realize visual management of operation, product quantity and machine tool status at a clear sight (central data processing system will be adopted in the future, and one screen will know the working status, quality, quantity and other data of all machine tools).

## 外形尺寸 Dimension



## 技术参数 Main Technical Parameters

机型	Model		DDH-85T	DDH-125T
加压能力	Capacity	KN	850	1250
行程	Stroke length	MM	30	30
最高转速	Maximum SPM	SPM	700	700
最低转速	Minimum SPM	SPM	150	150
闭模高度	Die height	MM	330-380	360-410
模高调整量	Die height adjustment	MM	50	50
滑块尺寸	Slider area	MM	1100 × 500	1400 × 600
工作台尺寸	Bolster area	MM	1100 × 750	1400 × 850
底座落料孔	Bed opening	MM	950 × 200	1100 × 300
工作台落料孔	Bolster opening	MM	800 × 150	1100 × 200
主马达	Main motor	KW	22 × 4P	37 × 4P
精度	Accuracy		JIS特级 / JIS Special grade	JIS特级 / JIS Special grade
总重	Total Weight	TON	18	27

# DDH-220T/300T

HOWFIT High Speed Precision Press  
豪辉高将精机

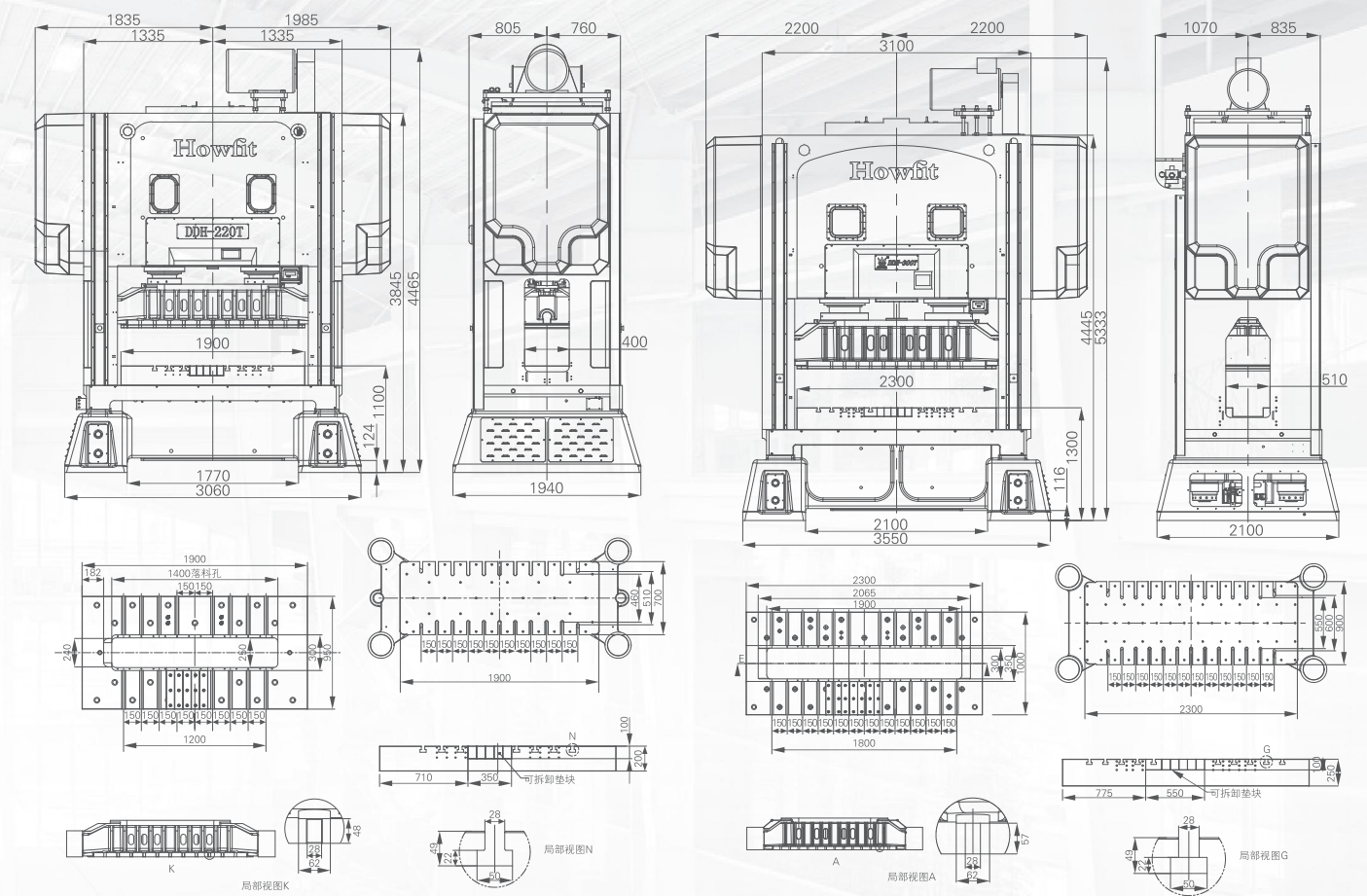


## 主要特点 Main Features

1. 床身采用高强度铸铁，精准控温回火后通过自然漫长时间消除工件内部应力，使床身工件性能达到最佳状态。
2. 床身机架的连接，使用机座螺栓紧固并使用油压动力，使机架结构预压，大幅提升机架刚性。
3. 强力灵敏的分离式离合器及刹车器，确保定位精密，制动灵敏。
4. 优异的动态平衡设计，将震动与噪音降到最低，并可确保模具寿命。
5. 曲轴采用NiCrMO合金钢，经过热处理、研磨等精密加工。
6. 滑块导轨与导杆间采用无间隙轴向轴承配合加长型导筒，使动、静态精度超越特级精度，亦使冲压模具寿命大幅提升。
7. 采用强制润滑冷却系统，降低机座热应变，确保冲压品质，延长机械寿命。
8. 人机界面微电脑控制，实现操作的可视化管理，产品数量，机床状态一目了然（后续将采用中央数据处理系统，一部屏幕知晓所有机床工作状态，质量，数量及其他数据）。

1. The frame is made of high strength cast iron, which eliminates the internal stress of the workpiece through natural long time after precise temperature control and tempering, so that the performance of the workpiece of the frame reaches the best state.
2. The connection of the bed frame is fastened by the Tie Rod and the hydraulic power is used to prepress the frame structure and greatly improve the rigidity of the frame.
3. Powerful and sensitive separation clutch and brake ensure precise positioning and sensitive braking.
4. Excellent dynamic balance design, minimize vibration and noise, and ensure the life of the die.
5. Crankshaft adopts NiCrMO alloy steel, after heat treatment, grinding and other precision machining.
6. The non-clearance axial bearing is used between the slide guide cylinder and the guide rod and match with the the extended guide cylinder, so that the dynamic and static accuracy exceeds the special grande precision, and the life of the stamping die is greatly improved.
7. Adopt the forced lubrication cooling system, reduce the heat strain of the frame, ensure the stamping quality, prolong the press life.
8. The man-machine interface is controlled by microcomputer to realize visual management of operation, product quantity and machine tool status at a clear sight (central data processing system will be adopted in the future, and one screen will know the working status, quality, quantity and other data of all machine tools).

## 外形尺寸 Dimension

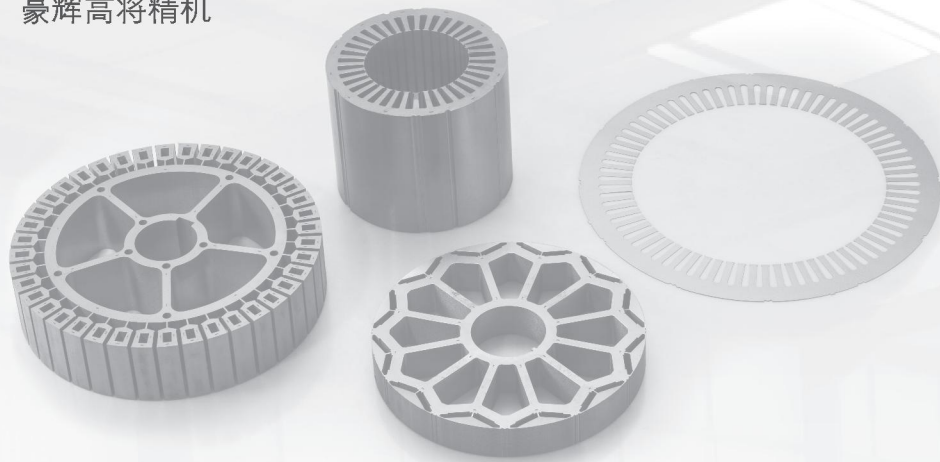


## 技术参数 Main Technical Parameters

机型	Model		DDH-220T	DDH-300T
加压能力	Capacity	KN	2200	3000
行程	Stroke length	MM	30	30
最高转速	Maximum SPM	SPM	600	450
最低转速	Minimum SPM	SPM	150	100
闭模高度	Die height	MM	370-420	400-450
模高调整量	Die height adjustment	MM	50	50
滑块尺寸	Slider area	MM	1900 × 700	2300 × 900
工作台尺寸	Bolster area	MM	1900 × 950	2300 × 1000
底座落料孔	Bed opening	MM	1500 × 300	2000 × 350
工作台落料孔	Bolster opening	MM	1400 × 250	1900 × 300
主马达	Main motor	KW	45 × 4P	55 × 4P
精度	Accuracy		JIS特级 / JIS Special grade	JIS特级 / JIS Special grade
总重	Total Weight	TON	45	65

# DDH-360T/400T

HOWFIT High Speed Precision Press  
豪辉高将精机

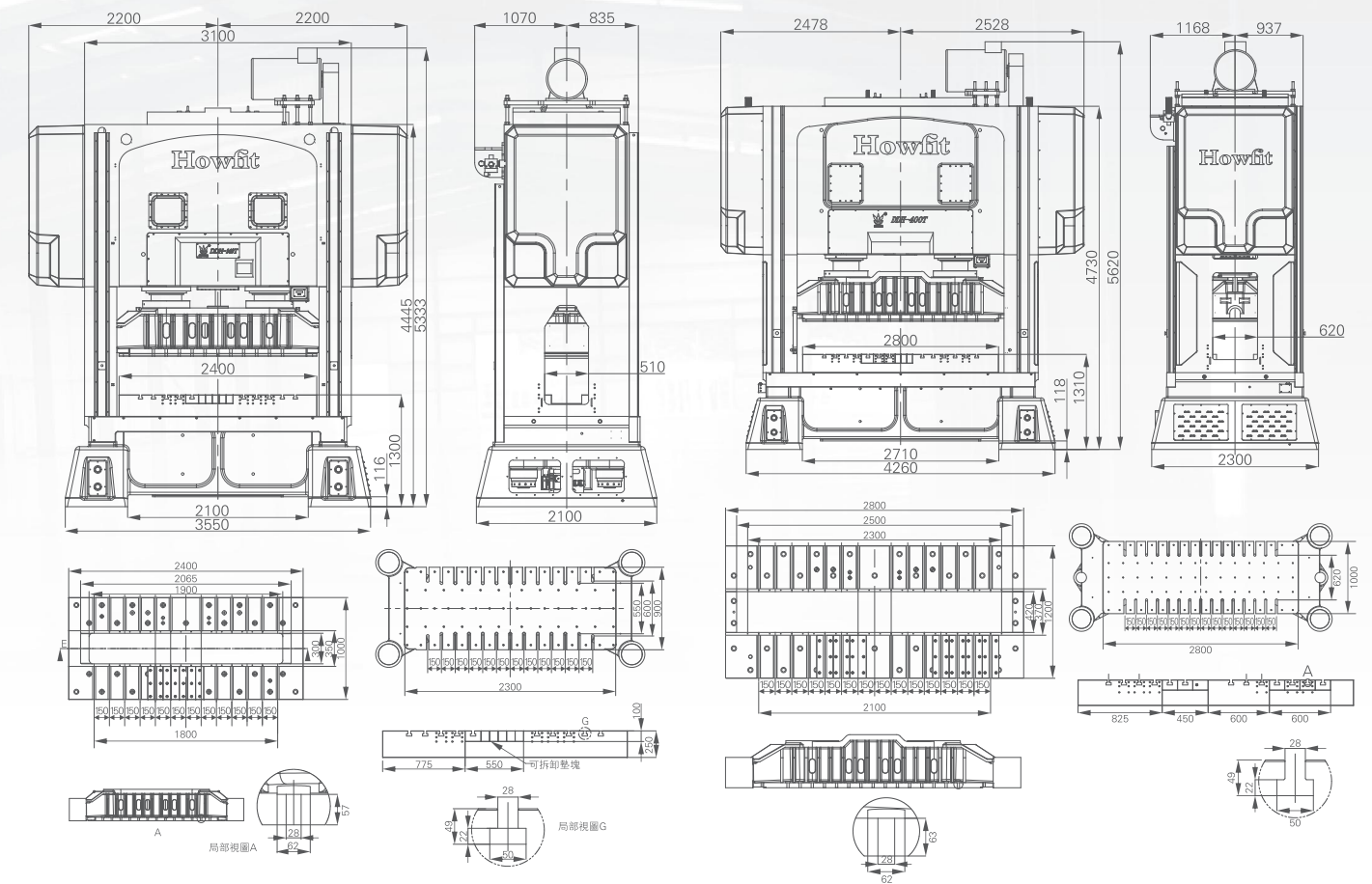


## 主要特点 Main Features

1. 床身采用高强度铸铁，精准控温回火后通过自然漫长时间消除工件内部应力，使床身工件性能达到最佳状态。
2. 床身机架的连接，使用机座螺栓紧固并使用油压动力，使机架结构预压，大幅提升机架刚性。
3. 强力灵敏的分离式离合器及刹车器，确保定位精密，制动灵敏。
4. 优异的动态平衡设计，将震动与噪音降到最低，并可确保模具寿命。
5. 曲轴采用NiCrMO合金钢，经过热处理、研磨等精密加工。
6. 滑块导轨与导杆间采用无间隙轴向往轴承配合加长型导筒，使动、静态精度超越特级精度，亦使冲压模具寿命大幅提升。
7. 采用强制润滑冷却系统，降低机座热应变，确保冲压品质，延长机械寿命。
8. 人机界面微电脑控制，实现操作的可视化管理，产品数量，机床状态一目了然（后续将采用中央数据处理系统，一部屏幕知晓所有机床工作状态，质量，数量及其他数据）。

1. The frame is made of high strength cast iron, which eliminates the internal stress of the workpiece through natural long time after precise temperature control and tempering, so that the performance of the workpiece of the frame reaches the best state.
2. The connection of the bed frame is fastened by the Tie Rod and the hydraulic power is used to prepress the frame structure and greatly improve the rigidity of the frame.
3. Powerful and sensitive separation clutch and brake ensure precise positioning and sensitive braking.
4. Excellent dynamic balance design, minimize vibration and noise, and ensure the life of the die.
5. Crankshaft adopts NiCrMO alloy steel, after heat treatment, grinding and other precision machining.
6. The non-clearance axial bearing is used between the slide guide cylinder and the guide rod and match with the the extended guide cylinder, so that the dynamic and static accuracy exceeds the special grande precision, and the life of the stamping die is greatly improved.
7. Adopt the forced lubrication cooling system, reduce the heat strain of the frame, ensure the stamping quality, prolong the press life.
8. The man-machine interface is controlled by microcomputer to realize visual management of operation, product quantity and machine tool status at a clear sight (central data processing system will be adopted in the future, and one screen will know the working status, quality, quantity and other data of all machine tools).

## 外形尺寸 Dimension

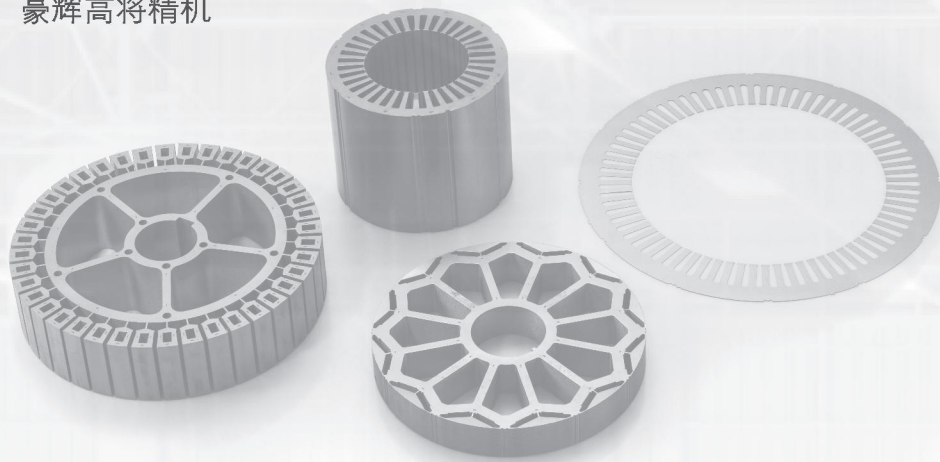


## 技术参数 Main Technical Parameters

机型	Model		DDH-360T	DDH-400T
加压能力	Capacity	KN	3600	4000
行程	Stroke length	MM	30	30/40
最高转速	Maximum SPM	SPM	400	300
最低转速	Minimum SPM	SPM	100	100
闭模高度	Die height	MM	400-450	400-450
模高调整量	Die height adjustment	MM	50	50
滑块尺寸	Slider area	MM	2300 × 900	2800 × 1000
工作台尺寸	Bolster area	MM	2400 × 1000	2800 × 1200
底座落料孔	Bed opening	MM	2000 × 350	2400 × 400
工作台落料孔	Bolster opening	MM	1900 × 300	2300 × 420
主马达	Main motor	KW	75 × 4P	75 × 4P
精度	Accuracy		JIS特级 / JIS Special grade	JIS特级 / JIS Special grade
总重	Total Weight	TON	66	85

# DDH-550T

HOWFIT High Speed Precision Press  
豪辉高将精机

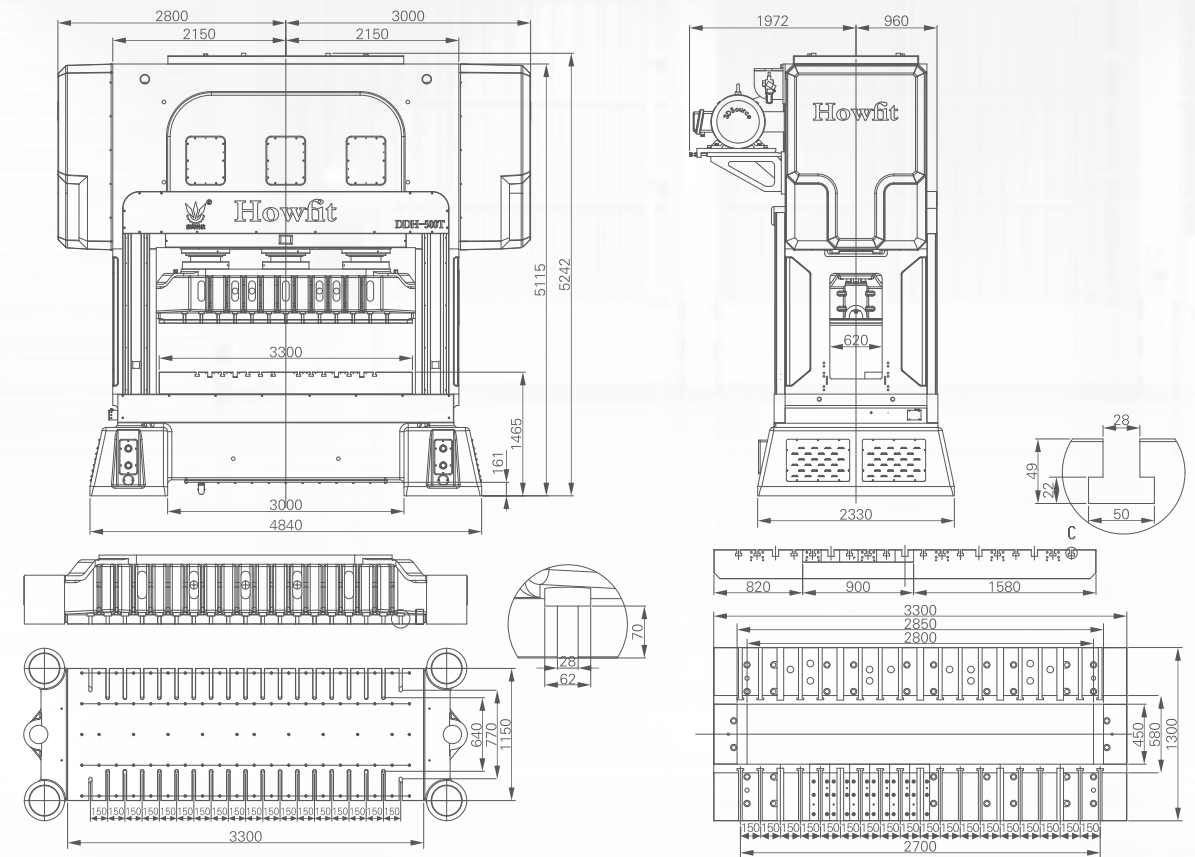


## 主要特点 Main Features

1. 床身采用高强度铸铁，精准控温回火后通过自然漫长时间消除工件内部应力，使床身工件性能达到最佳状态。
2. 床身机架的连接，使用机座螺栓紧固并使用油压动力，使机架结构预压，大幅提升机架刚性。
3. 强力灵敏的分离式离合器及刹车器，确保定位精密，制动灵敏。
4. 优异的动态平衡设计，将震动与噪音降到最低，并可确保模具寿命。
5. 曲轴采用NiCrMO合金钢，经过热处理、研磨等精密加工。
6. 滑块导筒与导杆间采用无间隙轴向轴承配合加长型导筒，使动、静态精度超越特级精度，亦使冲压模具寿命大幅提升。
7. 采用强制润滑冷却系统，降低机座热应变，确保冲压品质，延长机械寿命。
8. 人机界面微电脑控制，实现操作的可视化管理，产品数量，机床状态一目了然（后续将采用中央数据处理系统，一部屏幕知晓所有机床工作状态，质量，数量及其他数据）。
9. 三点式滑块结构，可确保超长台板的高刚性。

1. The frame is made of high strength cast iron, which eliminates the internal stress of the workpiece through natural long time after precise temperature control and tempering, so that the performance of the workpiece of the frame reaches the best state.
2. The connection of the bed frame is fastened by the Tie Rod and the hydraulic power is used to prepress the frame structure and greatly improve the rigidity of the frame.
3. Powerful and sensitive separation clutch and brake ensure precise positioning and sensitive braking.
4. Excellent dynamic balance design, minimize vibration and noise, and ensure the life of the die.
5. Crankshaft adopts NiCrMO alloy steel, after heat treatment, grinding and other precision machining.
6. The non-clearance axial bearing is used between the slide guide cylinder and the guide rod and match with the the extended guide cylinder, so that the dynamic and static accuracy exceeds the special grande precision, and the life of the stamping die is greatly improved.
7. Adopt the forced lubrication cooling system, reduce the heat strain of the frame, ensure the stamping quality, prolong the press life.
8. The man-machine interface is controlled by microcomputer to realize visual management of operation, product quantity and machine tool status at a clear sight (central data processing system will be adopted in the future, and one screen will know the working status, quality, quantity and other data of all machine tools).
9. Three points slide structure to make sure extra long table maintaining high rigidity.

## 外形尺寸 Dimension



## 技术参数 Main Technical Parameters

机型	Model	DDH-550T	
加压能力	Capacity	KN	5500
行程	Stroke length	MM	30/40
最高转速	Maximum SPM	SPM	200
最低转速	Minimum SPM	SPM	80
闭模高度	Die height	MM	400-450
模高调整量	Die height adjustment	MM	50
滑块尺寸	Slider area	MM	3300 x 1150
工作台尺寸	Bolster area	MM	3300 x 1300
底座落料孔	Bed opening	MM	2800 x 400
工作台落料孔	Bolster opening	MM	2800 x 450
主马达	Main motor	KW	90 x 4P
精度	Accuracy	JIS特级 / JIS Special grade	
总重	Total Weight	TON	110

# U-30T

## 下拉式 Pull-down Type Press

秉承工业智造 4.0，牢牢把握市场先机，我司携日本技术合作开发新式下拉式冲床 U-30。其技术经过市场检验，历久弥新。其长效性能及工业价值大大提升。

Adhering to industrial intelligent manufacturing 4.0, firmly grasp the market opportunities, our company and Japan technical team cooperate to develop the pull-down type press. Its technology has been tested in the market. Its long-term performance and industrial value are greatly improved.

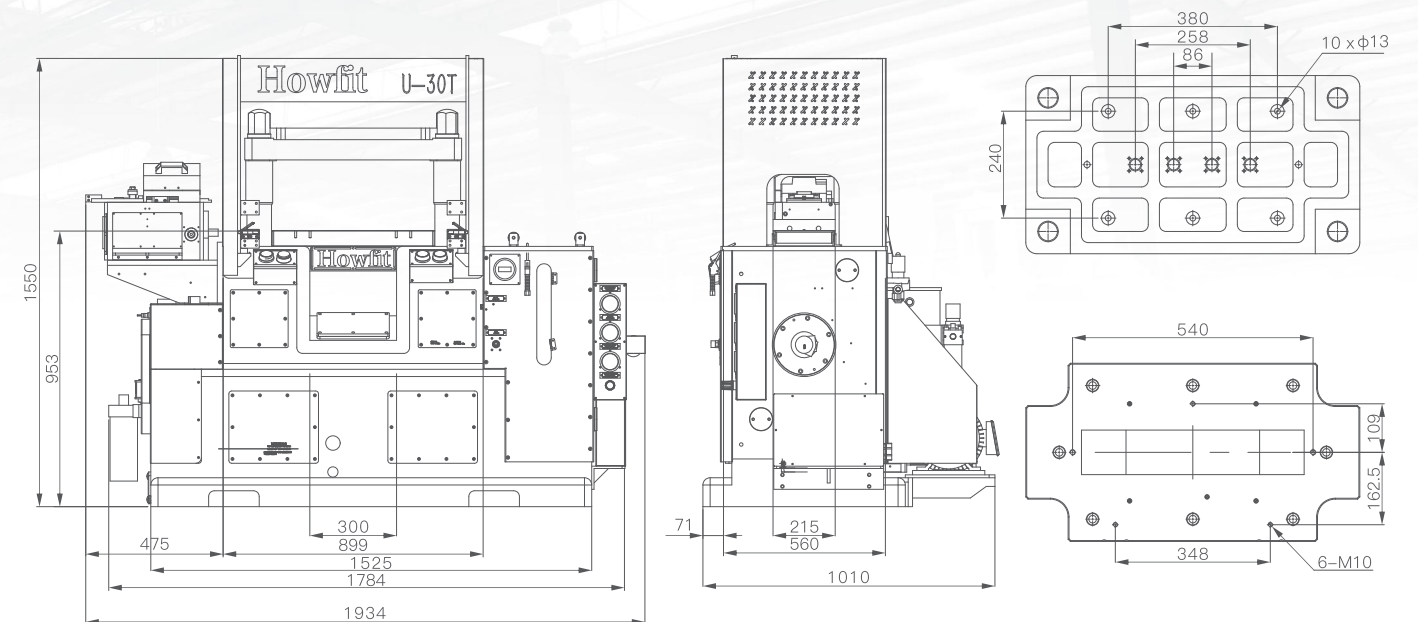


### 主要特点 Main Features

1. 结构采用球墨铸铁技术 QT700-2。具有高刚性、结构轻便、热平衡性好等特点。
2. 双连杆结构，滑槽距离长至 800mm。提高滑块的偏心载荷能力。
3. 滑动运转结构采用高品质合金铜材与滑动轴承相结合，间隙控制合理，精度保持度高、静音。
4. 反向气压减震技术，运行平稳，可配合气垫脚使用。
5. 伺服闭合高度调整加自动锁模系统，高速运动时精度变化小，方便快捷。
6. 人机界面微电脑控制，智能化工厂配套接入。

1. The structure adopts ductile iron technology QT700-2, with high rigidity, light structure and good thermal balance, etc.
2. Double linkage structure, the slide groove distance is as long as 800mm, improving the eccentric load capacity of the slider.
3. The sliding running structure adopts high quality alloy copper material combined with sliding bearing, with reasonable clearance control, high accuracy holding and silent.
4. Reverse air pressure damping technology, smooth running, can be used with air vibration pads.
5. Servo die height adjustment with automatic mold locking system, small accuracy change in high-speed movement, easy to adjust and fast.
6. Human-machine interface microcomputer control, intelligent factory supporting access.

### 外形尺寸 Dimension



### 技术参数 Main Technical Parameters

机型	Model	U-30T		
加压能力	Capacity	KN	300	
行程	Stroke length	MM	20	30
最高转速	Maximum SPM	SPM	600	500
最低转速	Minimum SPM	SPM	180	180
闭模高度	Die height	MM	185-215	183-213
模高调整量	Die height adjustment	MM	30	180-210
滑块尺寸	Slider area	MM	550 x 400	
工作台尺寸	Bolster area	MM	550 x 400 x 50	
工作台落料孔	Bolster opening	MM	100 x 500	
主马达	Main motor	KW	4kw x 4P	
精度	Accuracy		JIS特级 / JIS Special grade	
总重	Total Weight	TON	2.8	

# MARX-40T/50T/60T 80T/80W/125T

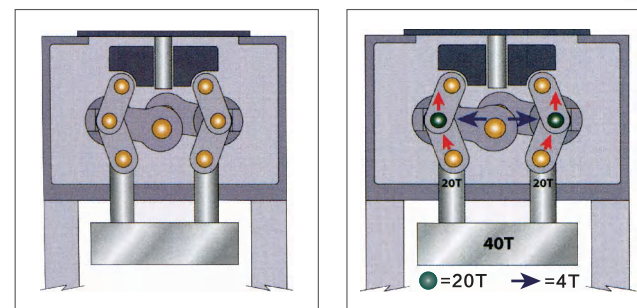
Knuckle Type High Speed Precision Press  
肘节式高速超精密压力机



MRAX特级精度--刚性好、精度高  
MRAX Superfine Precision--Good Rigidity and High Precision

滑块运动采用2柱塞+8面平面滚针导轨导向,接近零间隙的空间内导向运动。刚性好、抗偏载能力强,冲床精度高,抗冲击、抗磨损导轨材料确保冲床精度长期稳定,延长了模具冲头修模时间。

The slider is guided by a guide of double plungers and octahedral flat roller with nearly no clearance in it. It has good rigidity, high inclined loading resistance capability, and high punch press precision. High impact-resisting and wear-resisting property of the guide materials guarantee long-term stability of the press machine precision and prolong the intervals of repairing mould.

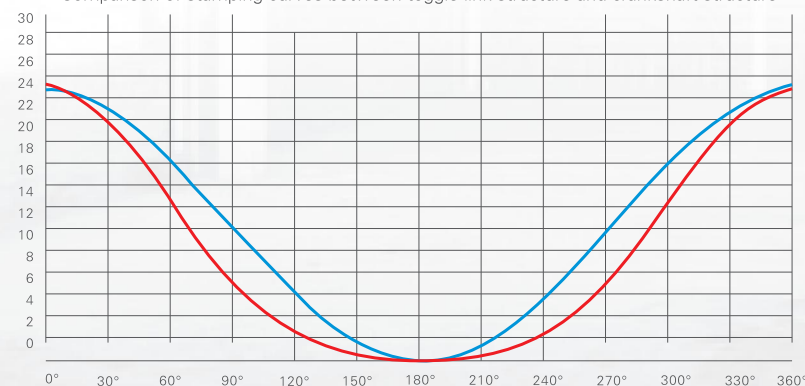


### 压印效果极佳 Perfect Stamping Effect

水平对称肘节连杆结构,使冲床滑块运动在下死点附近冲压曲线平滑,获得了极好的压印效果,满足引线框架等产品的压印要求。同时此结构的滑块运动方式,减少高速冲压时对模具的冲击,延长模具寿命。

Horizontally symmetrical symmetrical toggle linkage design ensure the slider moving smoothly near the bottom dead center and achieve a perfect stamping result, which meets the stamping requirements of lead frame and other products. Meanwhile, the motion mode of the slider reduces the impact on the mould at the time of high-speed stamping and prolongs the mould service life.

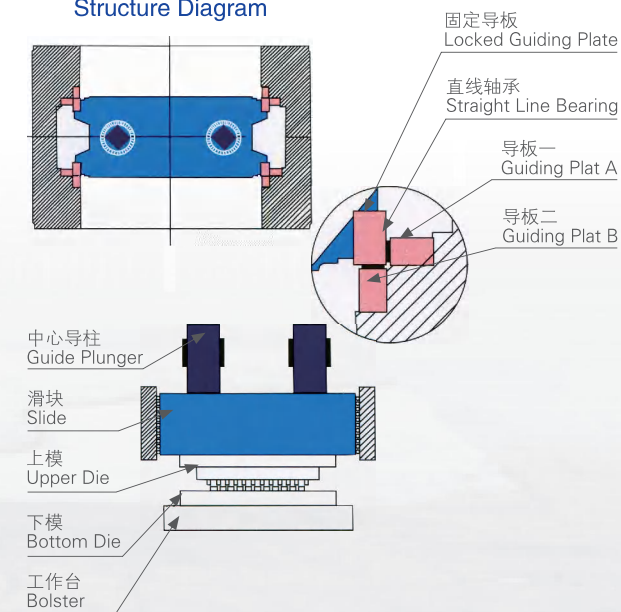
肘节连杆结构与曲轴结构冲压曲线对比图  
Comparison of stamping curves between toggle link structure and crankshaft structure



肘节式行程25mm  
Toggle travel 25mm

曲轴式行程25mm  
Crankshaft stroke 25mm

### 结构示意图 Structure Diagram



### 冲床精度出厂平均值 The average value of the precision of the punch press

肘节式高速精密冲床MARX系列产品精度表 Accuracy Inspection Form

机型 Model	检验项目 Inspection Item	检验方向 Direction	日本JIS标准mm JIS Standard	出厂平均值mm Factory Accuracy
MARX-30 MARX-40 行程 16mm Stroke 16mm	平行度 Parallelism	左右方向R-L	0.024/0.028mm	≤0.020mm
		前后方向F-B	0.017/0.018mm	≤0.015mm
	垂直度 Perpendicularity	左右方向R-L	0.009mm	≤0.003mm
		前后方向F-B	0.009mm	≤0.003mm
综合间隙 Total Clearance	左右两侧R-L	0.210/0.226mm	≤0.150mm	
MARX-60 MARX-80 行程 16mm Stroke 16mm	平行度 Parallelism	左右方向R-L	0.035/0.055mm	≤0.025mm
		前后方向F-B	0.022/0.039mm	≤0.020mm
	垂直度 Perpendicularity	左右方向R-L	0.009mm	≤0.003mm
		前后方向F-B	0.009mm	≤0.003mm
综合间隙 Total Clearance	左右两侧R-L	0.255/0.279mm	≤0.200mm	
MARX全系列 MARX Series	下死点精度 BDC Accuracy	恒温恒速 Constant-temperature Constant-velocity	---	≤0.002mm

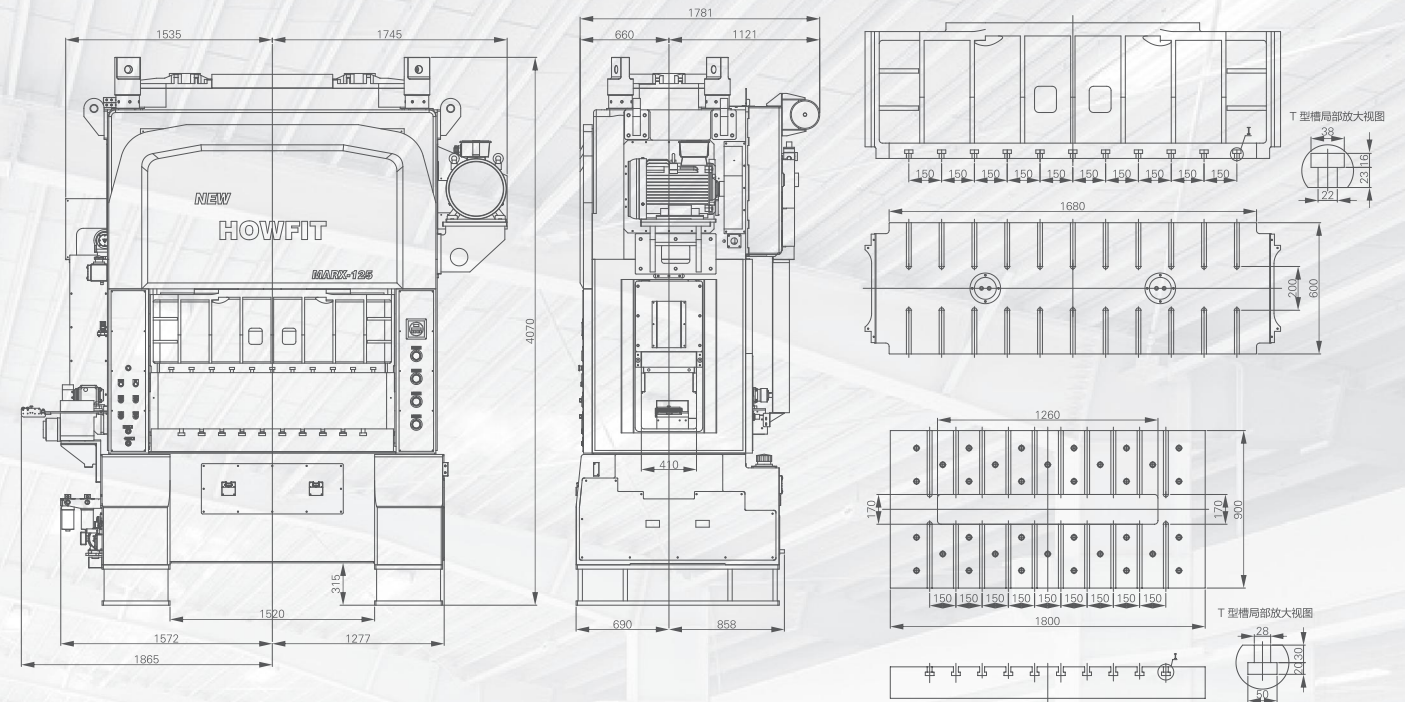
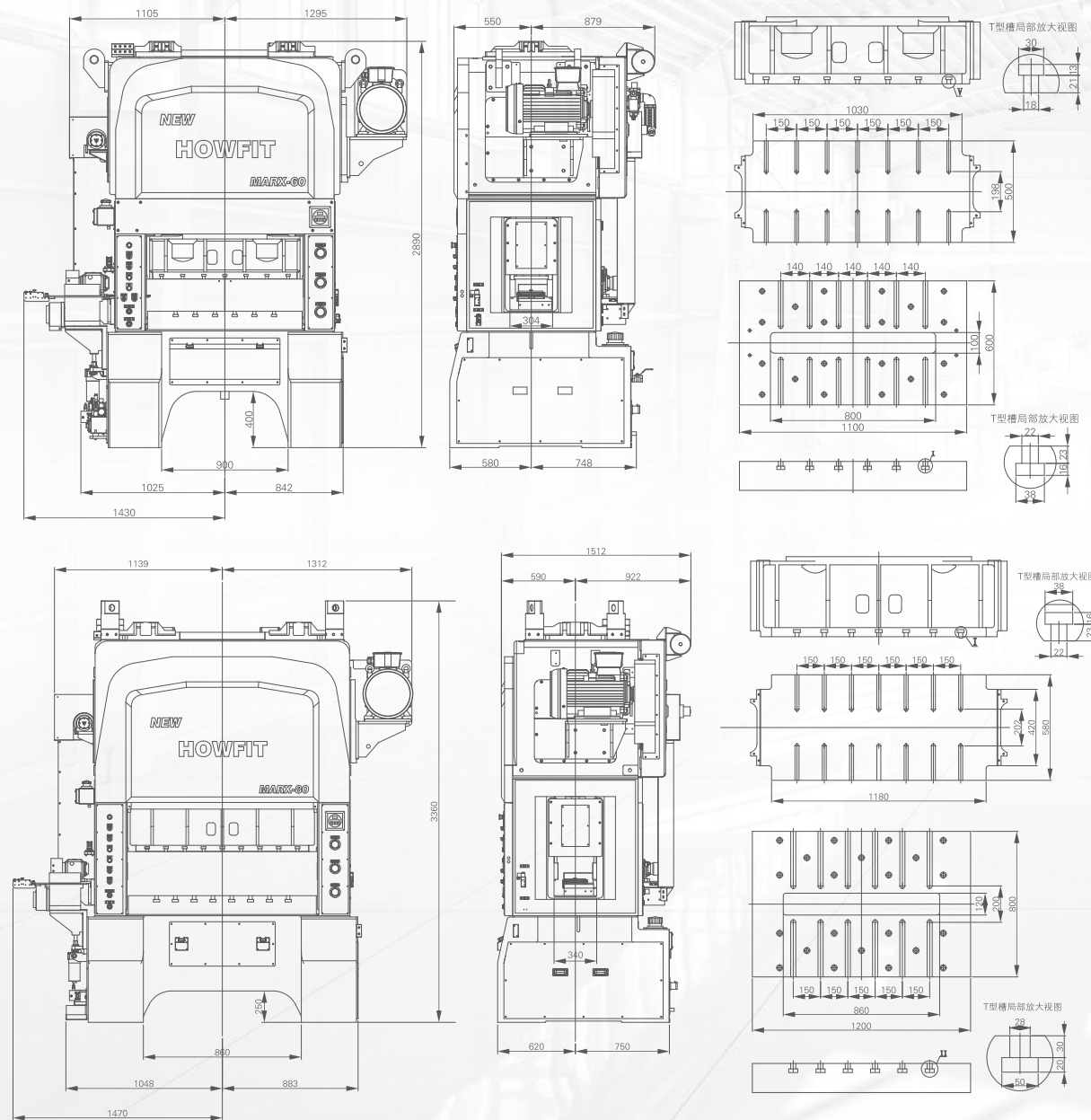


主要特点 Main Features

1. 该肘节式冲压机最大限度地发挥肘节式机构特性，具有高刚性、热平衡性好的特点。
2. 配备完全对向式平衡，尽可能减少由于SPM变化导致的闭模高度位移以及首次冲压与二次冲压的下死点位移。
3. 采用左右分力相互抵消的平衡机构、双柱8面滚针导轨各双导轨，进一步提高了滑块的偏心载荷能力。
4. 配备高寿命、低噪音的新型无侧隙离合器/制动器，实现更安静运转。工作台左右尺寸为60吨级1100mm、80吨级1500mm、在各自级别的产品系列中做到最宽。
5. 具有伺服调模功能，并配有模高记忆功能，降低换模时间提高了生产效率。

1. The knuckle type press maximizes its mechanism characteristics, it has the characteristics high rigidity, high accuracy and good heat balance.
2. Equipped with complete counterbalance, reduce the displacement of die height due to the stamping speed change, and reduce the bottom dead point displacement of the first stamping and the second stamping.
3. Adopted balance mechanism to balance each side's force, its structure is eight-sided needle bearing guiding, further improve the eccentric load capacity of the slider.
4. New non-backlash clutch brake with long life and low noise, achieve more quiet press work. The size of the bolster is 1100mm (60 tonnage) and 1500mm (80 tonnage), which is the widest for their tonnage in our full range of products.
5. With servo die height adjustment function, and with die height memory function, reduce the mold change time and improve production efficiency.

外形尺寸 Dimension



技术参数 Main Technical Parameters

机型	Model		MARX-40T				MARX-50T				MARX-60T			
加压能力	Capacity	KN	400				500				600			
行程	Stroke length	MM	16	20	25	30	16	20	25	30	20	25	32	40
最高转速	Maximum SPM	SPM	1000	900	850	800	900	800	800	750	750	750	650	550
最低转速	Minimum SPM	SPM	180	180	180	180	180	180	180	180	100	100	100	100
闭模高度	Die height	MM	190-240				190-240				220-300			
模高调整量	Die height adjustment	MM	50				50				80			
滑块尺寸	Slider area	MM	750 x 340				950x450				1130 x 500			
工作台尺寸	Bolster area	MM	750 x 500				950x600				1100 x 600			
底座落料孔	Bed opening	MM	560 x 120				800x120				840 x 120			
工作台落料孔	Bolster opening	MM	500 x 100				700x100				800 x 100			
主马达	Main motor	KW	15 x 4P				18X4P				22 x 4P			
精度	Accuracy		JIS特级 / JIS Special grade				JIS特级 / JIS Special grade				JIS特级 / JIS Special grade			
上模重量	Upper Die Weight	KG	MAX 105/105				MAX 180				MAX 450			
总重	Total Weight	TON	8				10				14			

机型	Model		MARX-80T				MARX-80W				MARX-125T		
加压能力	Capacity	KN	800				800				1250		
行程	Stroke length	MM	20	25	32	40	20	25	32	40	25	30	36
最高转速	Maximum SPM	SPM	600	550	500	450	500	450	400	300	400	350	300
最低转速	Minimum SPM	SPM	120	120	120	120	120	120	120	120	100	100	100
闭模高度	Die height	MM	240-320				240-320				360-440		
模高调整量	Die height adjustment	MM	80				80				80		
滑块尺寸	Slider area	MM	1080 x 580				1380x580				1800x600		
工作台尺寸	Bolster area	MM	1200 x 800				1500x800				1800x900		
底座落料孔	Bed opening	MM	900 x 160				1200x160				1500x160		
工作台落料孔	Bolster opening	MM	1050 x 120				1160x120				1260x170		
主马达	Main motor	KW	30 x 4P				30X4P				37X4P		
精度	Accuracy		JIS特级 / JIS Special grade				JIS特级 / JIS Special grade				JIS特级 / JIS Special grade		
上模重量	Upper Die Weight	KG	MAX 500				MAX 500				MAX 600		
总重	Total Weight	TON	19				22				36		

# 送料周边 Feeding perimeter

